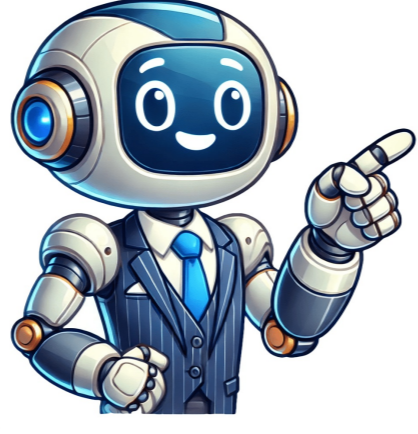


Continue

























The 5 Letter Words Change Log Includes a reverse chronological list of features, suggestions and bugs (usually raised by users), which can be followed and tracked through to implementation. Have a feature, suggestion or bug that you would like to bring to our attention? Please submit it via our contact us form. General Maintenance 22 June 2024 The "Find words" button has been updated to display "Reconnecting..." if the internet connection has been lost, and "Stop & Retry" if the query is taking too long to run. If "Stop & Retry" is displayed, the user has the option to wait for the query to complete (it may not, depending on the cause) or to click it again to stop and restart the existing query. The "Reset" button will now also stop a query that is in progress. General Maintenance 02 May 2024 To ensure there was no risk of missing out on feedback while the new website was being implemented, we ensured the contact us page was not modified during this time. Following a successful launch, the contact us form has been rebuilt. Visually it remains mostly the same, however some sections have been modified, while also introducing a new prompt for users who may be reporting on a bug. Errors for a small handful of users were seen after the launch of the new website. This contributed to problems such as placeholder words not filling the selection criteria, while also disrupting the traversal of DOM elements (from one letter to the next), upon keypad. Certain features of the site, including any "Share" functionality of word lists (and the resulting of shared lists), were stripped back to mitigate any issues re: placeholder values, while a more supported DOM traversal function was introduced to replace 'clientSet'. The "Share" functionality of word lists will be re-introduced at another point in time, with a better user experience. Keyway functions were also removed, in place of a more robust mechanism. This also brings with it an improved user experience, allowing for the faster typing of letters while organising your query. This has now been resolved. Apologies for the inconvenience. While the initial 'Do not include these letters' problem affected some users only (mostly across select android devices), an additional bug was identified whereby a query RESIST would cause a similar issue across all devices, preventing users from being able to input additional letters into the 'Do not include these letters' section. This has now been resolved. Apologies for the inconvenience. A bug has been reported, preventing some users from seeing all letters in the 'Do not include these letters' section. Recent updates to the main word finder were temporarily rolled back, while a fix was implemented. A huge thank you to everyone who raised the bug, I really appreciate the support. I monitor all feedback, and endeavour to create the best user experience possible across all my websites. General Maintenance 21 April 2024 Complete overhaul of 5 Letter Words, rebuilding the backend from the ground up. General Maintenance 20 April 2024 Optimised style sheets, removing 500 lines of redundant code, and consolidated media queries where possible. New fetching 72 random results on page load, and 96 across main word finders. General Maintenance 18 April 2024 Reviewed the look and feel of any content on main word finders, and internal and external links within this content. Included a link to Subway Rush Unlimited. General Maintenance 13 April 2024 Aligned style to that of partner site Subway Rush + general cleaning of style sheets. Introduced a media query for the inconvenience under 376px wide. This returns to the user 8 additional pixels of horizontal space, making letter selection on small phones easier. General Maintenance 21 July 2023 Modified automatic scroll to results on mobile, to create a smoother experience. This became choppy with the introduction of an network request. The scroll is now CSS based and not JS based. Scroll only occurs once results are successfully fetched. Updated the "Share" button style, while also modifying JS to use Web Share API on mobile. Removed from BETA. Bug discovered in 1, 4, 6 and 7 letter word finders. The "repetition sensitivity" setting only fetched results that contained a duplicate letter. We apologise for the inconvenience this has caused. General Maintenance 19 July 2023 Improved navigation to other word finders on desktop (Trial) Site Speed 16 July 2023 Improved configuration to benefit all users. Ad Network 16 July 2023 Migrated from Ezoic - AdSense to PubMoi. PubMoi's privacy policy can be found here. General Maintenance 16 July 2023 Increased width of browser window on desktop. Reduced intensity of the green background in "light" mode. Updated 27 November 2022 (Raised once, but great feature request! Further details will be provided once the feature is either implemented or 'decided against'. Thank you so much to everyone who has made a feature suggestion. Suggestion 27 November 2022 (Regularly raised feature request) Development of 1, 4, 6 and 7 letter word finders. Word List Update 27 November 2022 New words are being added to our word list. The warmth of thank you to everyone who has made a suggestion (every suggestion has been great), and the biggest of apologies for any inconvenience caused. Site Speed 25 November 2022 Some recent changes have slowed down some users (Phase 2). General Maintenance 20 July 2022 Introduce new navigations and supporting pages (Crowd Source Definitions 5 March 2022 Build infrastructure to allow the sourcing of fresh definitions. General Debugging 3 March 2022 Cleaned up support? and Howto's Query review Word Finder Interface 27 February 2022 Removing clutter from the Word Finder interface and bringing more attention to non-hidden elements Suggestion 25 February 2022 Introduce repeated letter sensitivity when searching for words Our Word Solver Tool will help you figure out the answer to the puzzle that's troubling you! Wordle is the game that has exploded in popularity all over the world. This simple puzzle has people playing every single day trying to maintain their streaks or share their results with others. If you are a fan of the game, you might from time-to-time have a hard time solving the puzzle. That's where our Wordle Solver Tool comes in handy. This will give you a helping hand when you are struggling, and can help you figure out the answer to the puzzle that's troubling you! If you just want the solution to the puzzle, you can find it on our Today's Wordle Answer page! Be sure to bookmark that tool so you can come back for additional help. This simple to use tool will help you solve any Wordle answer you are having trouble with. Just enter in the letters that you have gotten in the right spot into the same spot in the Correct Letters section. Add any letters that are in the puzzle but not in the right spot to the Missplaced Letters area. Finally, enter anything you've guessed that isn't right at all into the Incorrect Letters section. The potential answers will populate as you enter in letters, eventually giving you the solution! The Recommended Guesses are populated by words that contain the most letters based on the most common letters still available in the puzzle! This way you can see a word that should uncover the most likely letters on average. Common Letters display the amount of times the letter appears in all of the currently available words. Contains Letters allows you to specify the number of times a letter appears in a word. Tapping Contains will switch from limiting it to the number of occurrences to more to the exact amount of occurrences and so more or less. If you're hoping to improve at Wordle then we've got some tips for you that will hopefully have you solving these more easily next time you play! Use a good starting word! Try to figure out a few good words that will start your puzzles out with the best. The premise is straightforward - players have six attempts to guess a five-letter word, receives feedback after each guess about which letters are correct or misplaced. While the core gameplay is not new, Wordle's elegant design, social shareability, and "one puzzle per day" model created the perfect viral loop. Within months, millions were playing this modest little word game created by software engineer Josh Wardle. The game only allows one Wordle puzzle to be played per day, which can lead to frustration if you get stuck! This is where a Wordle Solver tool like ours can come in handy. How to use our Wordle Solver Wordle Solver is a free online tool that helps you solve Wordle puzzles by narrowing down the possibilities and making smart suggestions. Here's how to use it to help you solve a Wordle puzzle when you get stuck. Enter any green letters (correct letters in the right position) into the "Correct Letters" input box above. Make sure to enter them in the correct place on the order matters. Enter any yellow letters (letters but in the wrong position) into the "Missplaced Letters" input box above. The order doesn't matter for these letters. Enter any gray letters (letters that you know are not in the word) into the "Excluded Letters" input box above. The order doesn't matter for these letters either. Click the Find Words button. The tool will filter the word list and display possible solutions based on your input. Study the suggested words and select one as your next guess. If you're still stuck, update the letters in the Solver based on your guess results and click the Find Words button again. Repeat this process of guessing, updating, and filtering words until you solve the puzzle. Dordle, Quordle, Octordle, and more Since Wordle exploded in popularity in late 2021, numerous spinoffs and variations have emerged that put unique twists on the simple yet addictive word guessing game. Our Wordle Solver can also be used to solve the spinoffs that maintain the same core gameplay, including Dordle (7 guesses to find 2 words), Quordle (9 guesses to find 4 words), and Octordle (13 guesses to find 8 words). The Best Starting Word for Wordle Choosing an optimal starting word is crucial in Wordle, as it can significantly reduce the number of possible solutions and help players solve the puzzle in as few guesses as possible. There is ongoing debate around the statistically best starting words, with different methods and analyses suggesting different top choices. Some key factors to consider when selecting a starting word include vowel coverage, Words with 2, 3 vowels help eliminate possibilities quickly. Common vowels like A, E, O are especially useful. Common consonants - Letters like S, T, R, N, L appear frequently in answers and are good to include. Letter frequency analysis Studying which letters appear most often in each position in the Wordle answers can aid inform choices. Information Theory - Words that maximize entropy and information gain narrow down the answer space fastest on average. Future game strategy - A word that pairs well with high-value second guesses can optimize the two-turn information gain. Taking these factors into account, here are some of the top starting words suggested by different experts and analysts: Looking to enhance your word game skills? Our 5 Letter Word Finder for Wordle is the perfect tool for anyone looking to get help in a game or improve their vocabulary. Our word finder is designed to help you solve puzzles, not do them for you. We only show those possible words remaining in your Wordle grid, not spell the actual answer (unless of course if there's only one possible word left). With our Word Finder, you can generate a list of all possible five-letter words that can be made by re-arranging a given set of letters. Whether you're trying to solve Wordle, improve your Scrabble or Words With Friends skills, or any other word game, our tool will help you find the perfect word. Our word finder tool also features advanced filtering options, allowing you to find words based on criteria such as the starting letters, ending letters, letters in known positions, and letters to always include or always exclude. Using Five Letter Word Finder as a Wordle Solver Our word finder tool has three filters. Known Letters (Green): Enter the letters that you already know are in the word at specific positions. For example, if you know that the word starts with "CA" and ends with "T", you would enter "C" in the first box, "A" in the second box, and "T" in the last box. Excluded Letters (Yellow): Enter the letters that you know are not in the word. For example, if you know that the word does not contain the letters "Y" or "V", you would enter "Y" and "V" in the "Exclude Letters" (Gray) field. After entering your letters into the appropriate fields, click the "Find Words" button to find 5-letter words with these letters. Words that are common and more likely to be Wordle solutions are shown in bold. Using Five Letter Word Unscrambler To unscramble 5 letters into words, simply enter the letters you want to unscramble into the "Include Letters" (Yellow) field and leave the other fields empty. Our tool will generate a list of all possible words that can be made from those letters. For example, here is the list of 12 words that can be formed from the letters A, E, I, S, T, including "LEAST", "SLATE", "STALE" and "STEAL". Finding 5 Letter Words by Position If you know the position of certain letters in the word, you can use our tool to find words that match those positions. For example, if you know that the first letter in the word is "C", the third letter is "A", and the last letter is "N", you can enter "C" in the first green box, "A" in the third, and "N" in the fifth (last) green box. Press "Find Words" and you'll find the word you are looking for in this case. "CAIN" is the only word that matches this criteria. Sharing Search Results Our word finder tool allows you to save your search results for future reference or sharing. When you click the "Find Words" button, you will be redirected to a page that specifically shows only your search results. You can then share or bookmark this page for future reference. Reporting a Technical Issue If you encounter any technical issues with our website, please contact us at info@D Websterwordfinder.com and we will do our best to resolve the issue as soon as possible. Suggesting New Features We are always looking for ways to improve our website and make it more useful for our users. If you have any suggestions for new features or improvements, please contact us at info@D Websterwordfinder.com. Need help with Wordle or want to expand your 5 letter word vocabulary? Our word finder tool is here to help! Search our database of 14,855 five-letter words by entering letters you know. We include all Wordle-accepted words. Enter letters in their correct positions and use blanks for unknown spots. Add letters you know are in the word or exclude letters you know aren't present. Click "Search" to see all possible words that match. This tool works for Wordle, its variations, crossovers, and games like Wordle. Start with strong opening words like ADIEU, CRANE, or SLATE. For green tiles, enter those letters in the green boxes in their correct positions. For yellow tiles, enter those letters in the gray boxes (order doesn't matter). More boxes will appear as needed (up to 20). Click "Search" to find matching words. The most likely Wordle answers appear in bold at the top. After more guesses, update the boxes with new information and search again. Finding 5 Letter Words For Other Games Enter known letters in their correct positions in the green boxes Example: If "C" is the second letter, put "C" in the second box. Position matters for green boxes. Enter letters you know are in the word (but unsure where) in the yellow boxes. Example: If the word contains "T" somewhere, put "T" in a yellow box. Position doesn't matter for yellow boxes. Enter letters NOT in the word in the gray boxes to exclude them. More boxes will appear as needed (up to 20). Example: If the word doesn't contain "Z", put "Z" in a gray box. Position doesn't matter for excluded letters. Click "Search" after entering all your information. View the filtered results from our 5-letter word list. Refine your search by updating any boxes and clicking "Search" again. Screenshot: Stuck on a five letter word puzzle? Look no further! We've got all the tips and tricks you need to solve Wordle, Dordle, and Quordle with ease. First, it's important to know the basics. In Wordle, you'll need to guess the hidden five letter word based on the letters that have been revealed. Make use of common word patterns and letter combinations to improve your chances. In Wordle, it's all about finding words in a grid of letters. Try starting with common five letter words and look for words that share letters with each other to expand your words. For Dordle and Quordle, it's all about unscrambling the letters to form a word. Use your vocabulary and knowledge of word patterns to help you solve the puzzle. Enter letters NOT in the word in the gray boxes to exclude them. More boxes will appear as needed (up to 20). Click "Search" to see all possible words that match. This tool works for Wordle, its variations, crossovers, and games like Wordle. Start with strong opening words like ADIEU, CRANE, or SLATE. For green tiles, enter those letters in the green boxes in their correct positions. For yellow tiles, enter those letters in the gray boxes (order doesn't matter). More boxes will appear as needed (up to 20). Click "Search" to find matching words. The most likely Wordle answers appear in bold at the top. After more guesses, update the boxes with new information and search again. Finding 5 Letter Words For Other Games Enter known letters in their correct positions in the green boxes Example: If "C" is the second letter, put "C" in the second box. Position matters for green boxes. Enter letters you know are in the word (but unsure where) in the yellow boxes. Example: If the word contains "T" somewhere, put "T" in a yellow box. Position doesn't matter for yellow boxes. Enter letters NOT in the word in the gray boxes to exclude them. More boxes will appear as needed (up to 20). Example: If the word doesn't contain "Z", put "Z" in a gray box. Position doesn't matter for excluded letters. Click "Search" after entering all your information. View the filtered results from our 5-letter word list. Refine your search by updating any boxes and clicking "Search" again. Screenshot: Stuck on a five letter word puzzle? Look no further! We've got all the tips and tricks you need to solve Wordle, Dordle, and Quordle with ease. First, it's important to know the basics. In Wordle, you'll need to guess the hidden five letter word based on the letters that have been revealed. Make use of common word patterns and letter combinations to improve your chances. In Wordle, it's all about finding words in a grid of letters. Try starting with common five letter words and look for words that share letters with each other to expand your words. For Dordle and Quordle, it's all about unscrambling the letters to form a word. Use your vocabulary and knowledge of word patterns to help you solve the puzzle. Enter letters NOT in the word in the gray boxes to exclude them. More boxes will appear as needed (up to 20). Click "Search" to see all possible words that match. This tool works for Wordle, its variations, crossovers, and games like Wordle. Start with strong opening words like ADIEU, CRANE, or SLATE. For green tiles, enter those letters in the green boxes in their correct positions. For yellow tiles, enter those letters in the gray boxes (order doesn't matter). More boxes will appear as needed (up to 20). Click "Search" to find matching words. The most likely Wordle answers appear in bold at the top. After more guesses, update the boxes with new information and search again. Finding 5 Letter Words For Other Games Enter known letters in their correct positions in the green boxes Example: If "C" is the second letter, put "C" in the second box. Position matters for green boxes. Enter letters you know are in the word (but unsure where) in the yellow boxes. Example: If the word contains "T" somewhere, put "T" in a yellow box. Position doesn't matter for yellow boxes. Enter letters NOT in the word in the gray boxes to exclude them. More boxes will appear as needed (up to 20). Example: If the word doesn't contain "Z", put "Z" in a gray box. Position doesn't matter for excluded letters. Click "Search" after entering all your information. View the filtered results from our 5-letter word list. Refine your search by updating any boxes and clicking "Search" again. Screenshot: Stuck on a five letter word puzzle? Look no further! We've got all the tips and tricks you need to solve Wordle, Dordle, and Quordle with ease. First, it's important to know the basics. In Wordle, you'll need to guess the hidden five letter word based on the letters that have been revealed. Make use of common word patterns and letter combinations to improve your chances. In Wordle, it's all about finding words in a grid of letters. Try starting with common five letter words and look for words that share letters with each other to expand your words. For Dordle and Quordle, it's all about unscrambling the letters to form a word. Use your vocabulary and knowledge of word patterns to help you solve the puzzle. Enter letters NOT in the word in the gray boxes to exclude them. More boxes will appear as needed (up to 20). Click "Search" to see all possible words that match. This tool works for Wordle, its variations, crossovers, and games like Wordle. Start with strong opening words like ADIEU, CRANE, or SLATE. For green tiles, enter those letters in the green boxes in their correct positions. For yellow tiles, enter those letters in the gray boxes (order doesn't matter). More boxes will appear as needed (up to 20). Click "Search" to find matching words. The most likely Wordle answers appear in bold at the top. After more guesses, update the boxes with new information and search again. Finding 5 Letter Words For Other Games Enter known letters in their correct positions in the green boxes Example: If "C" is the second letter, put "C" in the second box. Position matters for green boxes. Enter letters you know are in the word (but unsure where) in the yellow boxes. Example: If the word contains "T" somewhere, put "T" in a yellow box. Position doesn't matter for yellow boxes. Enter letters NOT in the word in the gray boxes to exclude them. More boxes will appear as needed (up to 20). Example: If the word doesn't contain "Z", put "Z" in a gray box. Position doesn't matter for excluded letters. Click "Search" after entering all your information. View the filtered results from our 5-letter word list. Refine your search by updating any boxes and clicking "Search" again. Screenshot: Stuck on a five letter word puzzle? Look no further! We've got all the tips and tricks you need to solve Wordle, Dordle, and Quordle with ease. First, it's important to know the basics. In Wordle, you'll need to guess the hidden five letter word based on the letters that have been revealed. Make use of common word patterns and letter combinations to improve your chances. In Wordle, it's all about finding words in a grid of letters. Try starting with common five letter words and look for words that share letters with each other to expand your words. For Dordle and Quordle, it's all about unscrambling the letters to form a word. Use your vocabulary and knowledge of word patterns to help you solve the puzzle. Enter letters NOT in the word in the gray boxes to exclude them. More boxes will appear as needed (up to 20). Click "Search" to see all possible words that match. This tool works for Wordle, its variations, crossovers, and games like Wordle. Start with strong opening words like ADIEU, CRANE, or SLATE. For green tiles, enter those letters in the green boxes in their correct positions. For yellow tiles, enter those letters in the gray boxes (order doesn't matter). More boxes will appear as needed (up to 20). Click "Search" to find matching words. The most likely Wordle answers appear in bold at the top. After more guesses, update the boxes with new information and search again. Finding 5 Letter Words For Other Games Enter known letters in their correct positions in the green boxes Example: If "C" is the second letter, put "C" in the second box. Position matters for green boxes. Enter letters you know are in the word (but unsure where) in the yellow boxes. Example: If the word contains "T" somewhere, put "T" in a yellow box. Position doesn't matter for yellow boxes. Enter letters NOT in the word in the gray boxes to exclude them. More boxes will appear as needed (up to 20). Example: If the word doesn't contain "Z", put "Z" in a gray box. Position doesn't matter for excluded letters. Click "Search" after entering all your information. View the filtered results from our 5-letter word list. Refine your search by updating any boxes and clicking "Search" again. Screenshot: Stuck on a five letter word puzzle? Look no further! We've got all the tips and tricks you need to solve Wordle, Dordle, and Quordle with ease. First, it's important to know the basics. In Wordle, you'll need to guess the hidden five letter word based on the letters that have been revealed. Make use of common word patterns and letter combinations to improve your chances. In Wordle, it's all about finding words in a grid of letters. Try starting with common five letter words and look for words that share letters with each other to expand your words. For Dordle and Quordle, it's all about unscrambling the letters to form a word. Use your vocabulary and knowledge of word patterns to help you solve the puzzle. Enter letters NOT in the word in the gray boxes to exclude them. More boxes will appear as needed (up to 20). Click "Search" to see all possible words that match. This tool works for Wordle, its variations, crossovers, and games like Wordle. Start with strong opening words like ADIEU, CRANE, or SLATE. For green tiles, enter those letters in the green boxes in their correct positions. For yellow tiles, enter those letters in the gray boxes (order doesn't matter). More boxes will appear as needed (up to 20). Click "Search" to find matching words. The most likely Wordle answers appear in bold at the top. After more guesses, update the boxes with new information and search again. Finding 5 Letter Words For Other Games Enter known letters in their correct positions in the green boxes Example: If "C" is the second letter, put "C" in the second box. Position matters for green boxes. Enter letters you know are in the word (but unsure where) in the yellow boxes. Example: If the word contains "T" somewhere, put "T" in a yellow box. Position doesn't matter for yellow boxes. Enter letters NOT in the word in the gray boxes to exclude them. More boxes will appear as needed (up to 20). Example: If the word doesn't contain "Z", put "Z" in a gray box. Position doesn't matter for excluded letters. Click "Search" after entering all your information. View the filtered results from our 5-letter word list. Refine your search by updating any boxes and clicking "Search" again. Screenshot: Stuck on a five letter word puzzle? Look no further! We've got all the tips and tricks you need to solve Wordle, Dordle, and Quordle with ease. First, it's important to know the basics. In Wordle, you'll need to guess the hidden five letter word based on the letters that have been revealed. Make use of common word patterns and letter combinations to improve your chances. In Wordle, it's all about finding words in a grid of letters. Try starting with common five letter words and look for words that share letters with each other to expand your words. For Dordle and Quordle, it's all about unscrambling the letters to form a word. Use your vocabulary and knowledge of word patterns to help you solve the puzzle. Enter letters NOT in the word in the gray boxes to exclude them. More boxes will appear as needed (up to 20). Click "Search" to see all possible words that match. This tool works for Wordle, its variations, crossovers, and games like Wordle. Start with strong opening words like ADIEU, CRANE, or SLATE. For green tiles, enter those letters in the green boxes in their correct positions. For yellow tiles, enter those letters in the gray boxes (order doesn't matter). More boxes will appear as needed (up to 20). Click "Search" to find matching words. The most likely Wordle answers appear in bold at the top. After more guesses, update the boxes with new information and search again. Finding 5 Letter Words For Other Games Enter known letters in their correct positions in the green boxes Example: If "C" is the second letter, put "C" in the second box. Position matters for green boxes. Enter letters you know are in the word (but unsure where) in the yellow boxes. Example: If the word contains "T" somewhere, put "T" in a yellow box. Position doesn't matter for yellow boxes. Enter letters NOT in the word in the gray boxes to exclude them. More boxes will appear as needed (up to 20). Example: If the word doesn't contain "Z", put "Z" in a gray box. Position doesn't matter for excluded letters. Click "Search" after entering all your information. View the filtered results from our 5-letter word list. Refine your search by updating any boxes and clicking "Search" again. Screenshot: Stuck on a five letter word puzzle? Look no further! We've got all the tips and tricks you need to solve Wordle, Dordle, and Quordle with ease. First, it's important to know the basics. In Wordle, you'll need to guess the hidden five letter word based on the letters that have been revealed. Make use of common word patterns and letter combinations to improve your chances. In Wordle, it's all about finding words in a grid of letters. Try starting with common five letter words and look for words that share letters with each other to expand your words. For Dordle and Quordle, it's all about unscrambling the letters to form a word. Use your vocabulary and knowledge of word patterns to help you solve the puzzle. Enter letters NOT in the word in the gray boxes to exclude them. More boxes will appear as needed (up to 20). Click "Search" to see all possible words that match. This tool works for Wordle, its variations, crossovers, and games like Wordle. Start with strong opening words like ADIEU, CRANE, or SLATE. For green tiles, enter those letters in the green boxes in their correct positions. For yellow tiles, enter those letters in the gray boxes (order doesn't matter). More boxes will appear as needed (up to 20). Click "Search" to find matching words. The most likely Wordle answers appear in bold at the top. After more guesses, update the boxes with new information and search again. Finding 5 Letter Words For Other Games Enter known letters in their correct positions in the green boxes Example: If "C" is the second letter, put "C" in the second box. Position matters for green boxes. Enter letters you know are in the word (but unsure where) in the yellow boxes. Example: If the word contains "T" somewhere, put "T" in a yellow box. Position doesn't matter for yellow boxes. Enter letters NOT in the word in the gray boxes to exclude them. More boxes will appear as needed (up to 20). Example: If the word doesn't contain "Z", put "Z" in a gray box. Position doesn't matter for excluded letters. Click "Search" after entering all your information. View the filtered results from our 5-letter word list. Refine your search by updating any boxes and clicking "Search" again. Screenshot: Stuck on a five letter word puzzle? Look no further! We've got all the tips and tricks you need to solve Wordle, Dordle, and Quordle with ease. First, it's important to know the basics. In Wordle, you'll need to guess the hidden five letter word based on the letters that have been revealed. Make use of common word patterns and letter combinations to improve your chances. In Wordle, it's all about finding words in a grid of letters. Try starting with common five letter words and look for words that share letters with each other to expand your words. For Dordle and Quordle, it's all about unscrambling the letters to form a word. Use your vocabulary and knowledge of word patterns to help you solve the puzzle. Enter letters NOT in the word in the gray boxes to exclude them. More boxes will appear as needed (up to 20). Click "Search" to see all possible words that match. This tool works for Wordle, its variations, crossovers, and games like Wordle. Start with strong opening words like ADIEU, CRANE, or SLATE. For green tiles, enter those letters in the green boxes in their correct positions. For yellow tiles, enter those letters in the gray boxes (order doesn't matter). More boxes will appear as needed (up to 20). Click "Search" to find matching words. The most likely Wordle answers appear in bold at the top. After more guesses, update the boxes with new information and search again. Finding 5 Letter Words For Other Games Enter known letters in their correct positions in the green boxes Example: If "C" is the second letter, put "C" in the second box. Position matters for green boxes. Enter letters you know are in the word (but unsure where) in the yellow boxes. Example: If the word contains "T" somewhere, put "T" in a yellow box. Position doesn't matter for yellow boxes. Enter letters NOT in the word in the gray boxes to exclude them. More boxes will appear as needed (up to 20). Example: If the word doesn't contain "Z", put "Z" in a gray box. Position doesn't matter for excluded letters. Click "Search" after entering all your information. View the filtered results from our 5-letter word list. Refine your search by updating any boxes and clicking "Search" again. Screenshot: Stuck on a five letter word puzzle? Look no further! We've got all the tips and tricks you need to solve Wordle, Dordle, and Quordle with ease. First, it's important to know the basics. In Wordle, you'll need to guess the hidden five letter word based on the letters that have been revealed. Make use of common word patterns and letter combinations to improve your chances. In Wordle, it's all about finding words in a grid of letters. Try starting with common five letter words and look for words that share letters with each other to expand your words. For Dordle and Quordle, it's all about unscrambling the letters to form a word. Use your vocabulary and knowledge of word patterns to help you solve the puzzle. Enter letters NOT in the word in the gray boxes to exclude them. More boxes will appear as needed (up to 20). Click "Search" to see all possible words that match. This tool works for Wordle, its variations, crossovers, and games like Wordle. Start with strong opening words like ADIEU, CRANE, or SLATE. For green tiles, enter those letters in the green boxes in their correct positions. For yellow tiles, enter those letters in the gray boxes (order doesn't matter). More boxes will appear as needed (up to 20). Click "Search" to find matching words. The most likely Wordle answers appear in bold at the top. After more guesses, update the boxes with new information and search again. Finding 5 Letter Words For Other Games Enter known letters in their correct positions in the green boxes Example: If "C" is the second letter, put "C" in the second box. Position matters for green boxes. Enter letters you know are in the word (but unsure where) in the yellow boxes. Example: If the word contains "T" somewhere, put "T" in a yellow box. Position doesn't matter for yellow boxes. Enter letters NOT in the word in the gray boxes to exclude them. More boxes will appear as needed (up to 20). Example: If the word doesn't contain "Z", put "Z" in a gray box. Position doesn't matter for excluded letters. Click "Search" after entering all your information. View the filtered results from our 5-letter word list. Refine your search by updating any boxes and clicking "Search" again. Screenshot: Stuck on a five letter word puzzle? Look no further! We've got all the tips and tricks you need to solve Wordle, Dordle, and Quordle with ease. First, it's important to know the basics. In Wordle, you'll need to guess the hidden five letter word based on the letters that have been revealed. Make use of common word patterns and letter combinations to improve your chances. In Wordle, it's all about finding words in a grid of letters. Try starting with common five letter words and look for words that share letters with each other to expand your words. For Dordle and Quordle, it's all about unscrambling the letters to form a word. Use your vocabulary and knowledge of word patterns to help you solve the puzzle. Enter letters NOT in the word in the gray boxes to exclude them. More boxes will appear as needed (up to 20). Click "Search" to see all possible words that match. This tool works for Wordle, its variations, crossovers, and games like Wordle. Start with strong opening words like ADIEU, CRANE, or SLATE. For green tiles, enter those letters in the green boxes in their correct positions. For yellow tiles, enter those letters in the gray boxes (order doesn't matter). More boxes will appear as needed (up to 20). Click "Search" to find matching words. The most likely Wordle answers appear in bold at the top. After more guesses, update the boxes with new information and search again. Finding 5 Letter Words For Other Games Enter known letters in their correct positions in the green boxes Example: If "C" is the second letter, put "C" in the second box. Position matters for green boxes. Enter letters you know are in the word (but unsure where) in the yellow boxes. Example: If the word contains "T" somewhere, put "T" in a yellow box. Position doesn't matter for yellow boxes. Enter letters NOT in the word in the gray boxes to exclude them. More boxes will appear as needed (up to 20). Example: If the word doesn't contain "Z", put "Z" in a gray box. Position doesn't matter for excluded letters. Click "Search" after entering all your information. View the filtered results from our 5-letter word list. Refine your search by updating any boxes and clicking "Search" again. Screenshot: Stuck on a five letter word puzzle? Look no further! We've got all the tips and tricks you need to solve Wordle, Dordle, and Quordle with ease. First, it's important to know the basics. In Wordle, you'll need to guess the hidden five letter word based on the letters that have been revealed. Make use of common word patterns and letter combinations to improve your chances. In Wordle, it's all about finding words in a grid of letters. Try starting with common five letter words and look for words that share letters with each other to expand your words. For Dordle and Quordle, it's all about unscrambling the letters to form a word. Use your vocabulary and knowledge of word patterns to help you solve the puzzle. Enter letters NOT in the word in the gray boxes to exclude them. More boxes will appear as needed (up to 20). Click "Search" to see all possible words that match. This tool works for Wordle, its variations, crossovers, and games like Wordle. Start with strong opening words like ADIEU, CRANE, or SLATE. For green tiles, enter those letters in the green boxes in their correct positions. For yellow tiles, enter those letters in the gray boxes (order doesn't matter). More boxes will appear as needed (up to 20). Click "Search" to find matching words. The most likely Wordle answers appear in bold at the top. After more guesses, update the boxes with new information and search again. Finding 5 Letter Words For Other Games Enter known letters in their correct positions in the green boxes Example: If "C" is the second letter, put "C" in the second box. Position matters for green boxes. Enter letters you know are in the word (but unsure where) in the yellow boxes. Example: If the word contains "T" somewhere, put "T" in a yellow box. Position doesn't matter for yellow boxes. Enter letters NOT in the word in the gray boxes to exclude them. More boxes will appear as needed (up to 20). Example: If the word doesn't contain "Z", put "Z" in a gray box. Position doesn't matter for excluded letters. Click "Search" after entering all your information. View the filtered results from our 5-letter word list. Refine your search by updating any boxes and clicking "Search" again. Screenshot: Stuck on a five letter word puzzle? Look no further! We've got all the tips and tricks you need to solve Wordle, Dordle, and Quordle with ease. First, it's important to know the basics. In Wordle, you'll need to guess the hidden five letter word based on the letters that have been revealed. Make use of common word patterns and letter combinations to improve your chances. In Wordle, it's all about finding words in a grid of letters. Try starting with common five letter words and look for words that share letters with each other to expand your words. For Dordle and Quordle, it's all about unscrambling the letters to form a word. Use your vocabulary and knowledge of word patterns to help you solve the puzzle. Enter letters NOT in the word in the gray boxes to exclude them. More boxes will appear as needed (up to 20). Click "Search" to see all possible words that match. This tool works for Wordle, its variations, crossovers, and games like Wordle. Start with strong opening words like ADIEU, CRANE, or SLATE. For green tiles, enter those letters in the green boxes in their correct positions. For yellow tiles, enter those letters in the gray boxes (order doesn't matter). More boxes will appear as needed (up to 20). Click "Search" to find matching words. The most likely Wordle answers appear in bold at the top. After more guesses, update the boxes with new information and search again. Finding 5 Letter Words For Other Games Enter known letters in their correct positions in the green boxes Example: If "C" is the second letter, put "C" in the second box. Position matters for green boxes. Enter letters you know are in the word (but unsure where) in the yellow boxes. Example: If the word contains "T" somewhere, put "T" in a yellow box. Position doesn't matter for yellow boxes. Enter letters NOT in the word in the gray boxes to exclude them. More boxes will appear as needed (up to 20). Example: If the word doesn't contain "Z", put "Z" in a gray box. Position doesn't matter for excluded letters. Click "Search" after entering all your information. View the filtered results from our 5-letter word list. Refine your search by updating any boxes and clicking "Search" again. Screenshot: Stuck on a five letter word puzzle? Look no further! We've got all the tips and tricks you need to solve Wordle, Dordle, and Quordle with ease. First, it's important to know the basics. In Wordle, you'll need to guess the hidden five letter word based on the letters that have been revealed. Make use of common word patterns and letter combinations to improve your chances. In Wordle, it's all about finding words in a grid of letters. Try starting with common five letter words and look for words that share letters with each other to expand your words. For Dordle and Quordle, it's all about unscrambling the letters to form a word. Use your vocabulary and knowledge of word patterns to help you solve the puzzle. Enter letters NOT in the word in the gray boxes to exclude them. More boxes will appear as needed (up to 20). Click "Search" to see all possible words that match. This tool works for Wordle, its variations, crossovers, and games like Wordle. Start with strong opening words like ADIEU, CRANE, or SLATE. For green tiles, enter those letters in the green boxes in their correct positions. For yellow tiles, enter those letters in the gray boxes (order doesn't matter). More boxes will appear as needed (up to 20). Click "Search" to find matching words. The most likely Wordle answers appear in bold at the top. After more guesses, update the boxes with new information and search again. Finding 5 Letter Words For Other Games Enter known letters in their correct positions in the green boxes Example: If "C" is the second letter, put "C" in the second box. Position matters for green boxes. Enter letters you know are in the word (but unsure where) in the yellow boxes. Example: If the word contains "T" somewhere, put "T" in a yellow box. Position doesn't matter for yellow boxes. Enter letters NOT in the word in the gray boxes to exclude them. More boxes will appear as needed (up to 20). Example: If the word doesn't contain "Z", put "Z" in a gray box. Position doesn't matter for excluded letters. Click "Search" after entering all your information. View the filtered results from our 5-letter word list. Refine your search by updating any boxes and clicking "Search" again. Screenshot: Stuck on a five letter word puzzle? Look no further! We've got all the tips and tricks you need to solve Wordle, Dordle, and Quordle with ease. First, it's important to know the basics. In Wordle, you'll need to guess the hidden five letter word based on the letters that have been revealed. Make use of common word patterns and letter combinations to improve your chances. In Wordle, it's all about finding words in a grid of letters. Try starting with common five letter words and look for words that share letters with each other to expand your words. For Dordle and Quordle, it's all about unscrambling the letters to form a word. Use your vocabulary and knowledge of word patterns to help you solve the puzzle. Enter letters NOT in the word in the gray boxes to exclude them. More boxes will appear as needed (up to 20). Click "Search" to see all possible words that match. This tool works for Wordle, its variations, crossovers, and games like Wordle. Start with strong opening words like ADIEU, CRANE, or SLATE. For green tiles, enter those letters in the green boxes in their correct positions. For yellow tiles, enter those letters in the gray boxes (order doesn't matter). More boxes will appear as needed (up to 20). Click "Search" to find matching words. The most likely Wordle answers appear in bold at the top. After more guesses, update the boxes with new information and search again. Finding 5 Letter Words For Other Games Enter known letters in their correct positions in the green boxes Example: If "C" is the second letter, put "C" in the second box. Position matters for green boxes. Enter letters you know are in the word (but unsure where) in the yellow boxes. Example: If the word contains "T" somewhere, put "T" in a yellow box. Position doesn't matter for yellow boxes. Enter letters NOT in the word in the gray boxes to exclude them. More boxes will appear as needed (up to 20). Example: If the word doesn't contain "Z", put "Z" in a gray box. Position doesn't matter for excluded letters. Click "Search" after entering all your information. View the filtered results from our 5-letter word list. Refine your search by updating any boxes and clicking "Search" again. Screenshot: Stuck on a five letter word puzzle? Look no further! We've got all the tips and tricks you need to solve Wordle, Dordle, and Quordle with ease. First, it's important to know the basics. In Wordle, you'll need to guess the hidden five letter word based on the letters that have been revealed. Make use of common word patterns and letter combinations to improve your chances. In Wordle, it's all about finding words in a grid of letters. Try starting with common five letter words and look for words that share letters with each other to expand your words. For Dordle and Quordle, it's all about unscrambling the letters to form a word. Use your vocabulary and knowledge of word patterns to help you solve the puzzle. Enter letters NOT in the word in the gray boxes to exclude them. More boxes will appear as needed (up to 20). Click "Search" to see all possible words that match. This tool works for Wordle, its variations, crossovers, and games like Wordle. Start with strong opening words like ADIEU, CRANE, or SLATE. For green tiles, enter those letters in the green boxes in their correct positions. For yellow tiles, enter those letters in the gray boxes (order doesn't matter). More boxes will appear as needed (up to 20). Click "Search" to find matching words. The most likely Wordle answers appear in bold at the top. After more guesses, update the boxes with new information and search again. Finding 5 Letter Words For Other Games Enter known letters in their correct positions in the green boxes Example: If "C" is the second letter, put "C" in the second box. Position matters for green boxes. Enter letters you know are in the word (but unsure where) in the yellow boxes. Example: If the word contains "T" somewhere, put "T" in a yellow box. Position doesn't matter for yellow boxes. Enter letters NOT in the word in the gray boxes to exclude them. More boxes will appear as needed (up to 20). Example: If the word doesn't contain "Z", put "Z" in a gray box. Position doesn't matter for excluded letters. Click "Search" after entering all your information. View the filtered results from our 5-letter word list. Refine your search by updating any boxes and clicking "Search" again. Screenshot: Stuck on a five letter word puzzle? Look no further! We've got all the tips and tricks you need to solve Wordle, Dordle, and Quordle with ease. First, it's important to know the basics. In Wordle, you'll need to guess the hidden five letter word based on the letters that have been revealed. Make use of common word patterns and letter combinations to improve your chances. In Wordle, it's all about finding words in a grid of letters. Try starting with common five letter words and look for words that share letters with each other to expand your words. For Dordle and Quordle, it's all about unscrambling the letters to form a word. Use your vocabulary and knowledge of word patterns to help you solve the puzzle. Enter letters NOT in the word in the gray boxes to exclude them. More boxes will appear as needed (up to 20). Click "Search" to see all possible words that match. This tool works for Wordle, its variations, crossovers, and games like Wordle. Start with strong opening words like ADIEU, CRANE, or SLATE. For green tiles, enter those letters in the green boxes in their correct positions. For yellow tiles, enter those letters in the gray boxes (order doesn't matter). More boxes will appear as needed (up to 20). Click "Search" to find matching words. The most likely Wordle answers appear in bold at the top. After more guesses, update the boxes with new information and search again. Finding 5 Letter Words For Other Games Enter known letters in their correct positions in the green boxes Example: If "C" is the second letter, put "C" in the second box. Position matters for green boxes. Enter letters you know are in the word (but unsure where) in the yellow boxes. Example: If the word contains "T" somewhere, put "T" in a yellow box. Position doesn't matter for yellow boxes. Enter letters NOT in the word in the gray boxes to exclude them. More boxes will appear as needed (up to 20). Example: If the word doesn't contain "Z", put "Z" in a gray box. Position doesn't matter for excluded letters. Click "Search" after entering all your information. View the filtered results from our 5-letter word list. Refine your search by updating any boxes and clicking "Search" again. Screenshot: Stuck on a five letter word puzzle? Look no further! We've got all the tips and tricks you need to solve Wordle, Dordle, and Quordle with ease. First, it's important to know the basics. In Wordle, you'll need to guess the hidden five letter word based on the letters that have been revealed. Make use of common word patterns and letter combinations to improve your chances. In Wordle, it's all about finding words in a grid of letters. Try starting with common five letter words and look for words that share letters with each other to expand your words. For Dordle and Quordle, it's all about unscrambling the letters to form a word. Use your vocabulary and knowledge of word patterns to help you solve the puzzle. Enter letters NOT in the word in the gray boxes to exclude them. More boxes will appear as needed (up to 20). Click "Search" to see all possible words that match. This tool works for Wordle, its variations, crossovers, and games like Wordle. Start with strong opening words like ADIEU, CRANE, or SLATE. For green tiles, enter those letters in the green boxes in their correct positions. For yellow tiles, enter those letters in the gray boxes (order doesn't matter). More boxes will appear as needed (up to 20). Click "Search" to find matching words. The most likely Wordle answers appear in bold at the top. After more guesses, update the boxes with new information and search again. Finding 5 Letter Words For Other Games Enter known letters in their correct positions in the green boxes Example: If "C" is the second letter, put "C" in the second box. Position matters for green boxes. Enter letters you know are in the word (but unsure where) in the yellow boxes. Example: If the word contains "T" somewhere, put "T" in a yellow box. Position doesn't matter for yellow boxes. Enter letters NOT in the word in the gray boxes to exclude them. More boxes will appear as needed (up to 20). Example: If the word doesn't contain "Z", put "Z" in a gray box. Position doesn't matter for excluded letters. Click "Search" after entering all your information. View the filtered results from our 5-letter word list. Refine your search by updating any boxes and clicking "Search" again. Screenshot: Stuck on a five letter word puzzle? Look no further! We've got all the tips and tricks you need to solve Wordle, Dordle, and Quordle with ease. First, it's important to know the basics. In Wordle, you'll need to guess the hidden five letter word based on the letters that have been revealed. Make use of common word patterns and letter combinations to improve your chances. In Wordle, it's all about finding words in a grid of letters. Try starting with common five letter words and look for words that share letters with each other to expand your words. For Dordle and Quordle, it's all about unscrambling the letters to form a word. Use your vocabulary and knowledge of word patterns to help you solve the puzzle. Enter letters NOT in the word in the gray boxes to exclude them. More boxes will appear as needed (up to 20). Click "Search" to see all possible words that match. This tool works for Wordle, its variations,