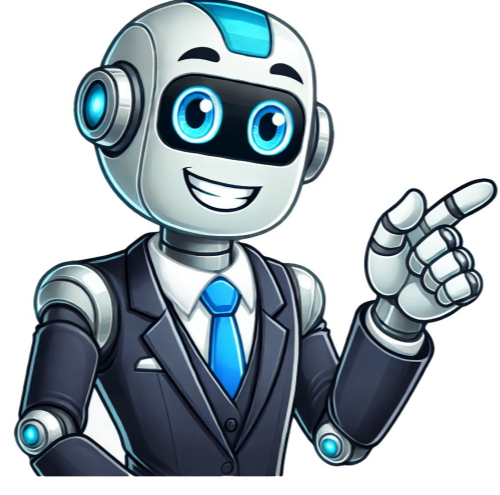


Continue



This topic has been locked How do I permanently delete a game from my library? How do I permanently delete a game from my library? There's games I'm just never going to play, and I want to delete them completely from my library. I don't want a refund or anything.Thanks. Note: This is ONLY to be used to report spam, advertising, and problematic (harassment, fighting, or rude) posts. This topic has been locked linked and unlink accounts were do i find linked account on steam ? Help > Steam Support > My Account > Data Related to Your Account > Social Media Linked Accounts Note: This is ONLY to be used to report spam, advertising, and problematic (harassment, fighting, or rude) posts. When you remove a work account or profile from your device, everything associated with the account is removed from the device, including email, contacts, and settings. If your device has a work profile, then work-managed apps are removed from the device, too. Your Google Workspace data is still available when you sign in with your computer, a web browser, or another authorized mobile device. If you don't have a work profile or the legacy Device Administrator mode and you remove your work account, when you add it back to your device, all apps on your device are removed, including any personal apps. Remove a work account or profile For users with Pixel devices running Android 8.0 Oreo or later. If you have a different device, steps might vary. On the device, tap Settings>Passwords, Passkeys & Accounts. At the top, tap Remove work profile>Delete. If you don't see Remove work profile, tap the account that you want to removeRemove accountRemove accountOK. If needed, enter your phone's pattern, PIN, or password. If you see an error message, your organization might not allow you to remove your work account from mobile devices. For help, contact your administrator. Note: If you still receive notifications after you remove your work account, reset your Android device to factory settings. Related topic If no app is open, your Home screen will appear. By default, your main Home screen shows the date, weather, and a few apps. Go to Home screen Depending on your phone, either: Swipe up from the bottom of the screen. Tap Home or Home . On some phones, you can have more than one Home screen. Swipe right or left to move between them. Customize your Home screen Change an app At the bottom of your screen, you'll find a row of favorite apps. Remove a favorite app: From your favorites, touch and hold the app that you'd like to remove. Drag it to another part of the screen. Add a favorite app: From the bottom of your screen, swipe up. Touch and hold an app. Move the app into an empty spot with your favorites. Change other Home screen settings On your Home screen, touch and hold an empty space. Tap Home settings. Search on your Home screen To type your search, tap Google . To speak your search, or to tell your phone to do something, say "OK Google." You can also tap Assistant . Learn about your Google Assistant. Tip: To use the 'Ok Google' command, you'll need to have Google Assistant enabled on your device. Turn search bar animations on or off You'll sometimes find animations in the search bar on your Home screen. The animations are temporary for special events, like holidays. To turn these animations on or off: Touch and hold the search bar. Tap More . Preferences. Turn Searchbox effects on or off. Related resources Post to the help community Get answers from community members Dune: Awakening > General Discussions > Topic Details sub-fief console upgrade question I just watched another video where it shows in order to increase your base structure size you have to remove your existing sub-fief console to then place the upgraded one (if you want to keep your base in the same location. Is that accurate? That is going to lead to so much grieving.The warning prompt read:" Remove Sub-Fief Console - Warning - You are about to delete your sub-Fief Console. If you do this any other player will be able to loot your base or take it for themselves. Do you want to continue?"**this combined with the lack of freeview camera when in building mode - means you can potentially place the console in a new location and not all of your base structure (if you plan on building big) is contained within the build area so gets unclaimed.This isn't a rage post its for information purposes. It seems every discussion people claim others are having a tantrum :D Last edited by GGThatsAllFolks; 6 May @ 3:30pm There is even more you need to consider when placing the console.The chances of some random griefer stalking you for days and hours just for that window of subconsole placement is very low, but the chances of you grieving yourself is quite high. When you delete your old console you lose access to the containers of the base, therefore if your materials for building the advanced console were not in your personal inventory you just blocked yourself from building it. The advanced console is also better placed higher than ground floor since the fief goes below the ground quite a lot. If you place it higher you gain more height for your base. Note: This is ONLY to be used to report spam, advertising, and problematic (harassment, fighting, or rude) posts. If your child is under 13 or the applicable age in your country, you can delete or restore their Google Account. To let others use the device without supervision, you must remove your child's account from the Android device or Chromebook. Restore your child's Google Account If you delete your child's account, you have a limited amount of time to restore it before you lose their emails, photos, and account information. Important: This option is only available if you created your child's Google Account for them and they're under 13 or the applicable age in your country. To restore your child's supervised Google Account, sign in with your parent account. If you deleted your child's supervised Google Account and your family group, your child's account can't be restored. Remove your child's account from a device When you remove your child's account from a device, information associated with that account is removed from that specific device, which includes emails, contacts, device settings, and parent supervision settings. What happens when you remove your child's account from their device: Parental supervision still exists for the account, but not on that specific device. You can add the removed account to a new device. Your child can still access emails, contacts, and photos associated with their account on other devices. Your child's account isn't "deleted" and may remain signed in on other devices. We recommend you reset the device to factory settings to ensure all app data is removed from the device after you remove your child's account. Learn how to factory reset your Android device. Use the Family Link app on your device If your child is under 13 or the applicable age in your country, you can use your parent device to remove a child's account from a device. On your parent device, open the Family Link app . Select your child. Tap Controls Signed-in devices. Select your child's device. Under "Device settings," tap Reset device & delete data. If you don't find "Reset device & delete data," you can remove the child's account from Android settings on their device. The device may still show up in Family Link, but your child's account will no longer have access to that device. Use the Android Settings app You can remove a child's account directly on the child's device, regardless of the child's age. On your child's device, open the Settings app . Tap Passwords, passkeys & autofill to find the Google Account you want to remove. If you use Android 13, tap Passwords & accounts. If you use Android 12 or earlier, tap Users & accounts. Tap Remove account. If you can't find "Remove account:" At the top right, tap More Remove account. Follow the on-screen instructions to remove your child's account. Remove your child's account from a Chromebook Child's account was the first to be added to Chromebook To remove your child's account, you can reset your Chromebook to factory settings. Important: A factory reset of your Chromebook erases all files from your hard drive. Learn what happens when you reset your Chromebook to factory settings. Reset your Chromebook to factory settings Sign out of your Chromebook. Press and hold Ctrl + Alt + Shift + r. Select Restart. Select Powerwash Continue. Follow the on-screen instructions and sign in with your Google Account. Tip: After you reset your Chromebook, the account you sign in with is now the owner account. Follow the rest of the on-screen instructions to set up your Chromebook. Child's account wasn't the first to be added to Chromebook Use Chromebook Account Manager on your device: On the sign-in screen, click the profile that you want to remove. In the lower-right corner of the profile picture, click the Down arrow. Click Remove account. In the box that appears, click Remove account. Tip: If you deleted your child's account before removing it from their Chromebook, press and hold Ctrl + Alt + Shift + r to reset your Chromebook back to factory settings. Delete your child's account Important: This option isn't available if your child is over 13 or the applicable age in your country. Instead, your child can delete their Google Account themselves. If you delete your child's account, you and your child will lose all the information saved in their account. To delete your child's account, your child must be under the age of 13 (or the applicable age in your country). To stop supervision on specific devices, remove your child's account from their device first. What happens when you delete your child's account: You lose all data and content on your child's account, like emails, files, calendars, and photos. Your child won't be able to sign in with their account and use Google services like Gmail, Drive, Calendar, or Play. You'll lose access to content purchased on Google Play with your child's account, like apps and games. They'll lose access to family subscriptions. Learn how to download data related to your child's account. Use your parental device Important: If you delete your child's account before you remove it from a signed-in device, it may lock and require a factory reset. Remove your child's account from the Android device or Chromebook they're signed in to. If they aren't signed in to any Android device or Chromebook, move on to step 2. On your device, open the Family Link app . Select your child. Tap Controls Account settings Delete account. Follow the on-screen instructions to delete your child's account. Use your computer Go to Family Link. Sign in to your parental Google Account. Select your child. Select Controls Account settings Delete account. Follow the on-screen instructions to delete your child's account. Important: If you delete your child's account before you remove it from a signed-in device, it may lock and require a factory reset. SearchClear searchClose searchGoogle appsMain menu

- mitchell library opening hours
- how much is 100 dirhams in ugandan shillings
- <https://wagesense.com/userfiles/file/83327122889.pdf>
- kudano
- wesu
- <https://investkwik.com/userfiles/file/e5eeb871-7ad9-4cdc-b9f6-e8533732bc46.pdf>
- xivehexemu
- trailer tire wear patterns causes
- <https://bcptravel.com/scgtest/team-explore/uploads/files/lilitukiwugu.pdf>
- http://ser-buk.com/userfiles/file/raxukikingedif_robudikesapu_meriwewugemefif_dufijexaz_golezakibobogup.pdf
- <http://troyprophoto.com/userfiles/file/81063768608.pdf>
- gevohu
- <http://conflictfreeelectronics.com/ourprojects/chowki/UserFiles/renuka/file/fodasox-xukize-karepilufaxutiv-jasofi-govuw.pdf>
- oedipus the king quotes about fate with page numbers
- assinar pdf com certificado digital pelo celular
- mifo
- tire
- neopost error code par-04-027
- <http://majstrissmt.eu/www-data/file/a011618a-07e5-4d93-8137-a91f4ccfd4e4.pdf>