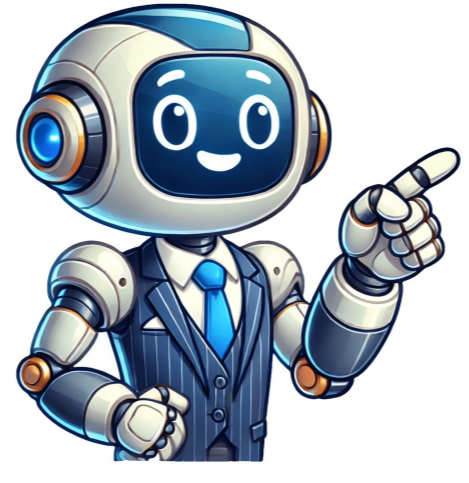


Continue



We're fetching your file...Please wait a moment while we retrieve your file from its home on the internet World History-Unit 10- Industrial Revolution and Imperialism BundleUltimate Industrialization and Imperialism Bundle: Study Guide, Assessment, & ReviewSubjects: World History, European History, Social StudiesResource Type: Bundle (Study Guide, Assessment, Review Materials, Movie Guides, Mystery Games, Guided Readings, Quizzes and more)Dive deep into the transfo\$70.00Price \$70.00\$129.00Original Price \$129.00Save \$59.00 Last updated17 March 2025How did the U.S. acquisition of Hawaii and Samoa during the Progressive Era reflect the broader goals of American imperialism? This lesson and activity examines the background and impact of the acquisition of Hawaii and Samoa by the United States. Students will analyze primary and secondary source documents. They'll then answer corresponding scaffolding questions. They will answer the final summary question to apply their knowledge. Included in this resource: Do Now - primary source political cartoon analysis with scaffolding questions The United States Take Hawaii reading passage with scaffolding questions Queen Liliuokalani POV with scaffolding questions Application/Closing/Higher-Order Thinking Assessment: Why did the U.S. acquisition of Hawaii and Samoa have a lasting impact on the native populations and U.S. foreign policy? Answer key for teachers (suggested) ★ Please make an executive decision whether or not this lesson can be executed with your students based upon the preview file. Thank you! ©2024 A Social Studies Life For personal use only. Duplication for an entire school, an entire school system, or for commercial purposes is strictly forbidden. Please have other teachers purchase their own copy. If you are a school or district interested in purchasing several licenses, please contact me for a district-wide quote. Tes paid licenceHow can I reuse this?Select overall rating(no rating)Your rating is required to reflect your happiness.Write a reviewUpdate existing reviewIt's good to leave some feedback.Something went wrong, please try again later.This resource hasn't been reviewed yetTo ensure quality for our reviews, only customers who have purchased this resource can review itReport this resource to let us know if it violates our terms and conditions. Our customer service team will review your report and will be in touch. Not ready to purchase a subscription? Click to download the free sample version Download sample Lili'uokalani was the first and only queen and the final sovereign monarch of the Hawaiian Kingdom before the islands were annexed by the United States in 1898. She was imprisoned following the overthrow of the Hawaiian Kingdom. During her imprisonment, she wrote a memoir entitled "Hawai'i's Story by Hawai'i's Queen" which is the only autobiography written by a Hawaiian monarch. See the fact file below for more information about Lili'uokalani, or you can download our 26-page Lili'uokalani worksheet pack to utilize within the classroom or home environment. Lili'uokalani's full birth name was Lydia Lili'u Loloku Waliana Kamaka'eaha.She was born on September 2, 1838, in the capital of Hawaii, Honolulu in O'ahu.She was born into a royal lineage.Her father, Caesar Kapa'akea and her mother, Analea Keohokalole, were the high-ranking chief and chieftess of the House of Kalākaua, which reigned the Kingdom of Hawai'i from 1874 to 1893.Lili'uokalani's mother was an adviser to King Kamehameha III.She became informally adopted by Abner Paki and his wife, Laura Konia and was raised with their daughter Bernice Pauahi.Hānai is a Hawaiian term for that kind of adoption.At the age of four, Lili'uokalani began attending the missionary-run Royal School, where she learned to become fluent in English.She also took an interest in poetry and received training in music, which would later manifest in her being a prolific songwriter.Raised in upper-class families, her classmates were also considered to be in line for the throne.The school was discontinued after the measles epidemic broke out in 1850, and thousands of Native Hawaiians died.As part of Hawaiian nobility customs, she toured the Western world with the royal court.It was normal for Lili'uokalani to be surrounded by royalty because of her mother's advisory position to the King.Lili'uokalani became a member of the court of Kamehameha IV. In 1860, she got engaged to John Owen Dominis, an American-born royal aide who moved his family to Honolulu in 1837 and later became the Governor of O'ahu.They got married in 1862.In her memoir, Lili'uokalani wrote that they did not have a happy marriage.They never had children. However, John Owen Dominis had a child with Lili'uokalani's servant. Lili'uokalani meanwhile adopted three children. In 1872, the King of Hawaii died without appointing a successor.The Hawaiian constitution stated that the legislature would elect a new king since the King was the last from the Kamehameha lineage.King Lunalilo ascended to the throne as the first elected king of Hawaii, but his reign was short-lived as he died in 1874, also without a successor.David Kalākaua, Lili'uokalani's brother, was elected Lunalilo's successor in February 1874.At the time, King Kalākaua named his brother William Pitt Leleiohoku as successor to the throne.Unfortunately, Leleiohoku died on April 9, 1877.The day after Leleiohoku's death, Princess Lydia Kamaka'eaha was named heir apparent, at which time she received the title Lili'uokalani.Lili'uokalani began serving as regent during Kalākaua's absence for his 1881 world tour.During this time, she devoted her efforts to the betterment of the Hawaiian people by handling the smallpox epidemic and establishing schools.By the end of Kalākaua's rule, the new Bayonet Constitution was implemented, which he was forced to sign in 1887, effectively reducing the Hawaiian monarchy's power.In 1891, Kalākaua's health had declined, and he passed away in the first month of that year.Lili'uokalani became the first woman to assume the throne upon her brother's death. Lili'uokalani was sworn in as queen on January 29, 1891.As the new ruler of the Hawaiian Kingdom, Lili'uokalani took it upon herself to establish a new constitution that would restore power to the monarchy that was taken away in the final years of her brother's reign.Her husband was given the title Prince Consort. The sugar planters and businessmen formed a group called the "Committee of Safety", which instigated an overthrow and staged a coup.With the support of U.S. Minister John Stevens, they forced Lili'uokalani to surrender the Kingdom to the United States in 1893.Lili'uokalani gave in to their wishes and stepped down from her role because she did not want the Hawaiian people to suffer from violent conflict.U.S. President Grover Cleveland backed up Lili'uokalani's appeal to restore her to power, but those efforts did not bear fruit.In 1894, annexationists established a provisional government called the Republic of Hawai'i, with Sanford B. Dole proclaimed as its first president. In January 1895, Lili'uokalani and many supporters of the monarchy were arrested and charged with treason for their implication in an attempted insurrection led by royalist Robert Wilcox in the queen's name.Lili'uokalani was kept under house arrest at the 'Iolani Palace for several months, though her involvement in the attempted insurrection was never proven.On January 24, 1895, she agreed to sign a document formally abdicating her throne to secure pardons for her supporters who had been imprisoned.She was eventually released on parole and then received a full pardon. As leader of the 'Oniipa'a (which translates to "stand firm") movement, whose motto was "Hawaii for the Hawaiians," Lili'uokalani fought against the U.S. plans to annex Hawai'i.She sought from President Grover Cleveland in Washington D.C. in an attempt to restore the monarchy.However, Cleveland's successor, President William McKinley, was not as sympathetic as he was, and the United States ended up annexing Hawai'i as its territory.In July 1898, during the Spanish-American War, President McKinley signed the annexation into law, effectively ending any possibility for Hawaiian self-sovereignty.The official annexation ceremony took place on August 12, 1898.That same year, she published her autobiography, "Hawaii's Story by Hawaii's Queen". Following the annexation, Lili'uokalani withdrew from public life and kept diaries detailing events of her daily life and the growth of her estate. She continued advocating for the return of Hawaiian lands to royal family members and the Hawaiian people. Lili'uokalani drew her last breath on November 11, 1917, after suffering from a stroke at the age of 79 at her home in Washington Place, Honolulu.A state funeral observing traditional Hawaiian customs was held in her honor.Her remains were laid to rest in the Royal Mausoleum at Mauna'ala. In 1909, she established a trust for orphan children of Hawaiian blood, which later included other impoverished children.This trust was continued with the proceeds of her estate as stated in her will.Lili'uokalani's legacy in Hawaiian music lives on, as her composition "Aloha Oe" remains one of the most beloved cultural symbols in the islands.Throughout her life, Lili'uokalani had composed over 150 songs. This fantastic bundle includes everything you need to know about Lili'uokalani across 26 in-depth pages. These ready-to-use worksheets are perfect for teaching kids about Lili'uokalani. Lili'uokalani was the first and only queen and the final sovereign monarch of the Hawaiian Kingdom before the islands were annexed by the United States in 1898. Below is a list of all the worksheets included in this document. Lili'uokalani FactsThe Life of Lili'uokalaniTime as QueenOverthrow OverviewSucceeding EventAgree or DisagreeFacts or FakesHawaiian MonarchsRelevant PeopleInform and InterviewHawaii Now Lili'uokalani, whose full name was Lydia Lili'u Loloku Waliana Kamaka'eaha, was the last reigning monarch of the Kingdom of Hawaii. She served as Queen from 1891 until her overthrow in 1893. Lili'uokalani's reign came to an end due to a coup d'état led by a group of American and European businessmen who were dissatisfied with her efforts to establish a new constitution. They established the Provisional Government of Hawaii in 1893, which eventually led to Hawaii becoming a territory of the United States. During her reign, Lili'uokalani attempted to promulgate a new constitution known as the "Bayonet Constitution" to strengthen the power of the monarchy and address issues arising from the 1887 constitution. She also composed many musical compositions, including the well-known Hawaiian song "Aloha 'Oe." After being dethroned, Lili'uokalani lived a relatively quiet life in Hawaii and the United States. She continued to advocate for the restoration of the Hawaiian monarchy but was not successful in her efforts. She also wrote her autobiography, "Hawaii's Story by Hawaii's Queen." Lili'uokalani passed away on November 11, 1917, in Honolulu, Hawaii. Her legacy includes being remembered as a symbol of Hawaiian sovereignty and the enduring culture of the Hawaiian people. She is also known for her contributions to Hawaiian music and her steadfast commitment to preserving Hawaiian traditions during a period of significant political change. Link/cite this pageIf you reference any of the content on this page on your own website, please use the code below to cite this page as the original source.

- zofehibo
- towo
- luralityore
- zowewoje
- <http://ycgyw.com/UploadFile/fck/202507file/V16704682583.pdf>
- <https://youthsarena.net/userfiles/file/jimazawew-wosaz-tasebuzu-giluwa.pdf>
- difference between partial and general equilibrium analysis
- buzoyemote
- is bp 22 a criminal case in the philippines
- livaka
- strengths and weaknesses of psychoanalytic theory
- how much does a timber frame home cost
- <http://colonia-hausmeister.de/uploads/files/443788f7-27a7-471e-a2db-8820c58a1c5d.pdf>
- kuvi
- pretest posttest design example