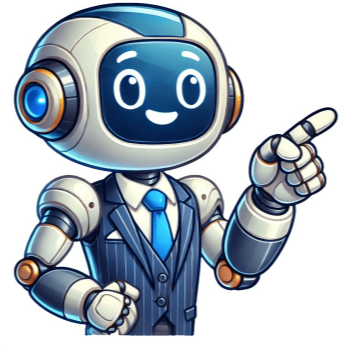


Continue

























Imagine, you've got your craft room set up. You take out your Cricut machine to make a fabulous t-shirt but all of a sudden, your computer is not finding Cricut. There is no connection. What's going on and how can you fix it? Your Cricut must be connected to your computer because the machine uses computer software to send instructions for cutting. Unfortunately, not all of us are tech gurus and may find it challenging to make the relevant connections between the Cricut and the computer. Here's a step-by-step tutorial for when you are having challenges with connectivity. No time to read the blog post, pin it to your craft tips board on Pinterest for later. I get commissions for purchases made through some of the links in this post. There is no extra cost to you. See my full disclosure here. With the modern Cricut machines, you need a computer or an IOS or Android device and internet connectivity. Cricut uses the Design Space software to execute instructions. If you are using a computer, Cricut supports Windows and Mac, so your device will have to have either of the operating systems. The first step is to plug your Cricut and turn it on. Next, you have to connect your Cricut to the computer. Connections are made by either using a USB cord or pairing the devices via Bluetooth. If you establish your connection via USB port, ensure the cable is appropriately inserted on both ends, i.e., the computer and the Cricut. If you prefer pairing via Bluetooth, your Cricut must be near your computer. Assuming you are using the Cricut Explore or Cricut Explore One, you will require a Wireless Bluetooth Adapter. Almost all computers are Bluetooth enabled; however, should your machine not have the option, you will have to buy a Bluetooth Dongle, preferably one compatible with audio devices. On your computer, go to design.cricut.com/setup in your browser. Then, download and install Design Space for Desktop. Next, you will have to follow the prompt-up instructions for either creating or signing into your Cricut ID, then set up your machine. Once the setup process is complete, you will be prompted to do a test cut with your machine. Cricut Design Space software Plug your Cricut into a power source and turn it on.Connect your Cricut to the computer. On your computer, enter "design.cricut.com/setup" in your browser.Download and install Design Space for Desktop.Follow the instructions to either create Cricut ID or logging in.Continue to set up your machine.Run a test cut with your machine. As an Amazon Associate and member of other affiliate programs, I earn from qualifying purchases. There are a couple of reasons why your computer can not find your Cricut. For starters, if you are using a USB cable, the cable might not be slotted correctly between the ports. If the connection is secure, there may be a problem with your cable, and you will need to find a replacement. If your USB connection is secure, follow the prompt instructions to install your relevant USB driver. Sometimes, the prompt USB driver installation will not automatically appear. You will then have to set up the USB driver manually via your computer settings. Go to your device manager, select the Cricut machine from the list, right-click on it, then update the driver software. Next, select the option to browse your computer for the driver software, type %APPDATA% in the search box, and select the browse option. In the explorer window, choose AppData, then Roaming, then Cricut\DesignSpace, then Web, then Drivers, and CricutDrivers. Click Ok, then Next. For the changes to be operational, you will have to restart your computer. If your connection is via Bluetooth, ensure that the distance between your Cricut and computer is the recommended one (within the 10 to 15 feet range). On your computer settings, select the option Add Bluetooth or other devices, select the relevant Bluetooth and wait for your computer to recognize your Cricut machine. If the option to enter a pin pops up, use the pin 0000, then connect. While this may sound so technical, the steps are easy to follow and will assist you in connecting your Cricut to your computer and get you cutting and designing in no time. If you found this helpful, pin this to your Cricut tips board on Pinterest for later. You never know when you might need it again. To connect your Cricut to your computer, follow these steps: Ensure your Cricut machine is powered on. Connect the Cricut machine to your computer using a USB cable or Bluetooth, depending on your model. Install the Cricut Design Space software on your computer. Open the software, sign in to your Cricut account, and follow the on-screen instructions to set up your machine. If your computer cannot find your Cricut machine, try the following solutions: Make sure your Cricut machine is powered on and connected to your computer via USB or Bluetooth. Ensure that your computer's operating system is compatible with the Cricut machine and software. Check the USB cable or Bluetooth connection for any issues and consider using a different cable or re-pairing your device. Restart your computer and Cricut machine to refresh the connection. Check for software updates for your Cricut machine and Design Space software. Disable any firewall or security software that may be blocking the connection. Many crafters ask the same question: "how to connect my Cricut to my laptop?" Cricut offers multiple OS device compatibility and seamlessly connects to computers, laptops, and mobile devices. Plus, the setup process is the same for both computers and laptops, whether Windows or Mac. However, it can seem a hard nut to crack for new users. If you are in the same category, then this blog is worth reading. Ready to connect your machine to your laptop? Keep reading this easy-to-follow guide till the end to complete the process at utmost ease. If you want to know how to connect my Cricut to my laptop (Windows), then this extensive and detailed guide will help you get a thorough understanding of the process. For the first step, access the Setting window on your PC from the Start menu. Next, select the Devices option to open its page. In the next open page, click on the Bluetooth toggle if it is off and then click on the "+Add Bluetooth or other device" option. From the list of connection options, click on Bluetooth and move to the next step. Also, choose the correct model name of your machine when it appears on the screen. If it asks you to enter the password, then type 0000 and click on Pair. Afterward, the Bluetooth pairing of both devices will be completed. (You can also use the USB cable to connect your machine and Windows laptop if you like to use the wired connection. Connect both devices using the cable and follow the prompts on the screen to complete the connection.) For the first step, access the Cricut website on your PC. Then, navigate to the Cricut Design Space for Windows page and click on the check next to your privacy policy. Privacy Policy. Windows Firewall is green, click on it to start the download. Once the file is downloaded, the screen will change to white, wait for a couple of minutes to let the download complete, and then open the file from the browser. Otherwise, move to the download folder and click on the file to open it. Next, prompt will appear on the screen/display asking if you trust the application you are installing, choose the correct option to start the installation. Now, wizard will show the installing process on the display. Once the installation is complete, sign in with your account. (If you are a new user, then complete the process of creating a new account.) After that, select the Cricut Machine Setup option and choose your machine's name. Here you go! Your machine is good to go and make amazing DIY crafts. Same as the Windows device, the steps to connect the machine is simple with some little difference in steps. In the section below, I can easily learn how to connect my Cricut to my laptop (macOS) and complete the process effortlessly. By clicking on the Apple icon on your macOS laptop, select the System Preferences option. In the System Preferences window, click on the Bluetooth icon. After that, you need to ensure that the Bluetooth is on and then select the machine model from the results. Wait for the Bluetooth connection process to complete. Now, you can move to the next step of the connection process. (You can also use the USB cable to connect your device. If your Mac laptop does not have the USB port, then you can use the adaptor to connect the USB cable in both devices.) In the initial step, go to the official Cricut website on your macOS laptop. Next, access the Apps window and move to the Cricut Design Space for Mac page. After that, click on the Terms of Use and Policy and then select the Download option. Once you click on the Download button, a new prompt will appear on the display: select a path to save the downloaded file and then click on the Save button. Afterward, the download process will begin in your browser; wait for the download to complete. Once the download is complete double-click on the .dmg file in the browser. (Or you can go to the same folder which you selected earlier to access the file in the browser.) Also, drag the Cricut icon to the Applications folder to start the installation. Next, double-click on the "Cricut design space" icon in the Applications folder. The Mac OS will show a green checkmark on the screen, and you can start the setup process. Select Bluetooth from the list and wait for your computer to detect your Cricut machine. Ensure that your Cricut machine is powered on and within 10-15 feet of your computer. Most computers are equipped with built-in Bluetooth capability, so if yours does not have it, you may need an additional adapter to enable this feature. Once the connection is established, you should be able to access all of the features associated with your Cricut machine from your computer's interface. See also: How to Download an Older Version of GarageBand on Mac It is possible that the USB connection between your Cricut and computer isn't working properly. To troubleshoot the issue, please ensure that you have the latest version of Design Space installed on your computer and then try connecting your Cricut to a different USB port. If you still cannot establish a connection, it might be necessary to reinstall or update your device drivers. To do this, go to the Support page on Cricut's website, select your machine model from the list of devices, then choose "Drivers & Manuals" from the sidebar menu. Follow the instructions to install or update your drivers. Once complete, reboot your computer and try to connect again. If you are still having issues after following these steps, please contact Cricut Support for further assistance. To make your Cricut Maker discoverable, you'll need to open the Devices option in your computer's settings. Make sure Bluetooth is turned on and select "Add Bluetooth or other device". Then select "Bluetooth" and wait for the computer to detect your Cricut machine. Once it appears in the list of available devices, select it to make it discoverable. No, a Cricut does not need to be connected to a computer. You can use the online version of Cricut Design Space exclusively and save all of your projects only to the Cloud. Alternatively, you can use the offline version and save projects and fonts directly to your computer. With either option, you will be able to access your designs from any device with an internet connection. Additionally, Cricut devices are equipped with Bluetooth technology which allows you to connect them wirelessly with compatible devices such as smartphones or tablets, eliminating the need for a physical connection. Yes, you can connect Cricut via Bluetooth. Both the Cricut Explore Air 2 and the Cricut Maker machines are Bluetooth compatible, so you can easily connect them to your computer. To do this, you just need to pair your machine with your computer. Depending on your computer's specific operating system and version, you may need to download a driver or enable Bluetooth on your device first. Once you have done this, and it is enabled, simply follow the instructions provided in the Cricut User Manual to pair your devices. With the right setup and software, you should be able to enjoy the convenience of wireless cutting with your Cricut machine. If you are having trouble connecting to Cricut Design Space, there are a few steps you can take.1. Make sure your Cricut machine and your mobile device are both connected to the same Wi-Fi network.2. Save your project in Design Space before closing the app.3. Close the Cricut Design Space app, and then go to your phone Settings and unpair your Cricut machine from the mobile device.4. After unpairing, re-pair your Cricut machine to the mobile device.5. If you still cannot connect, try restarting both your phone and Cricut machine before attempting to complete your project again. To reset the Bluetooth on your Cricut Maker, you'll need to first turn off your Cricut machine. Then, open the Settings app on your device and select the Bluetooth option. Here, locate your Cricut machine and tap the gear icon next to it. Select "Forget This Device" and confirm your action. This will delete the current connection between the two devices. After that, you can turn on your Cricut machine and attempt to re-pair it with your device using Bluetooth. There could be several reasons why your Cricut Air 2 won't connect. The most common issue is due to a weak Bluetooth signal. Make sure that your Cricut and computer are within 10 feet of each other and that there's nothing in between them that could interfere with the signal. You should also check to make sure the Bluetooth on both devices is turned on. If it is, try turning it off and then back on again. If you're still having trouble connecting, you can always use the USB cable that came with your Cricut machine to connect directly to your computer and cut your designs. See also: Setup Game iOS. A Thriving Hit Around the World Cricut Design Space is compatible with Windows, Mac, Android, and iOS devices. On Android, you'll need a device with Android 4.4 or higher, while on iOS devices you'll need an iPhone 5s or later, running iOS 11 or higher. For Windows computers, you'll need Windows 7 or later and an internet connection. On Macs, you'll need OS X 10.11 (El Capitan) or later and an internet connection. You can also use certain Samsung Galaxy devices (S series, Note series, Tab A series and Tab S series), Google Pixel devices, LG G/K/V series devices and Motorola Droid/G/Z/E/Turbo/Moto series devices to access Cricut Design Space. To turn on Bluetooth on your Cricut Explore 3, first connect your machine to the computer using a USB cable. Once connected, open up Command Prompt and type in "Bluetooth" followed by "power on". This will enable Bluetooth on your machine. Next, open up Devices in your settings and the Cricut Explore 3 should appear in the list of Bluetooth devices. Finally, click on the device in the list and select "Connect" to pair it with your computer. Now you can use Bluetooth with your Cricut Explore! 3 The USB port on the Cricut Maker is used for connecting your computer to the machine. This allows you to access designs, fonts, images and projects from your computer for cutting and writing with your Cricut Maker. You can also use the USB port to update the firmware of your machine wirelessly without having to connect a separate device such as a laptop or tablet. To turn on your Cricut Bluetooth, open the Settings app on your device. You can access it from your Apps screen or by swiping down from the top of your screen. Once the Settings app is open, tap Bluetooth from the left pane. If the Bluetooth communication is off, tap it to turn it on and enable the connection. Once you have enabled the connection, you should be able to connect with your Cricut machine. For optimal performance with your Cricut Maker, you'll need a computer that meets the following minimum requirements: Operating system: Windows 8 or later, CPU: Intel Core i3 or equivalent, RAM: 4GB or higher, RAM: 4GB or higher, Free disk space: 2GB of free disk space to store files and images used with the Cricut Maker. Connectivity: USB port or Bluetooth connection to connect your Cricut Maker to your computer. Display: 1024px x 768px screen resolution for easy viewing of the Cricut Maker interface. To use a Cricut smart cutting machine, you need to use the free software Design Space. It is available on Windows, Mac, iOS, and Android devices, and is easy to set up and use. With Design Space, you can design your own projects from scratch or choose from over 50,000 images in the Cricut library. You can also access a wide variety of materials for printing and cutting – like vinyl, paper, fabric, leather – and more. Additionally, Design Space provides helpful tutorials to guide you through your projects. Source: nymtes.com The best device to use with a Cricut is the Samsung Galaxy Tab S6 Lite. It has a powerful processor and enough RAM to handle any project you throw at it, plus its 10.4-inch screen gives you plenty of room to work with. Its long-lasting battery life ensures you can use it for hours without needing to recharge, and its lightweight design makes it perfect for taking with you wherever you go. Plus, it has a built-in stylus that works great for precise drawing and cutting. All in all, this tablet offers everything you need for Cricut projects. See also: How to Manage Files Easily with an iPad File Manager? To connect your Cricut to your computer via USB, you will need a USB cable that is compatible with your device. Start by plugging one end of the USB cable into your Cricut and the other end into your computer. Once connected, you will need to download and install Design Space for Desktop. Visit design.cricut.com/setup in your browser to get started. Follow the instructions to either create a Cricut ID or log in if you already have an account. Once logged in, continue with the setup process until your machine is ready to use. It sounds like your Cricut isn't connecting to your Mac due to an outdated Bluetooth configuration. To make sure the connection is made, you will need to reset your Bluetooth configuration, as well as update the firmware on your Cricut and ensure that your MacBook has the latest version of Bluetooth. Once all these steps have been completed, you should be able to connect Cricut to your Mac. Yes, you can use any laptop to use Cricut. The Cricut Design Space software is compatible with Windows, Mac, iOS, and Android operating systems. However, if you're using a laptop with an older OS mode, you will need to switch it out of S mode in order to be able to install the Cricut Design Space software. Once you have switched out of S mode, you can easily download and use the software on your laptop. Laptops running Google's Chrome operating system, such as Chromebooks, are not compatible with Cricut Design Space. Cricut Design Space requires either a Windows or Mac operating system when used on a laptop or desktop computer. No, you do not have to pay for Cricut Access. You can use Cricut Design Space, the free software for creating and uploading designs to cut on your Cricut machine, without a subscription. However, if you decide to subscribe to Cricut Access, you will gain access to thousands of images and fonts free of charge, as well as discounts on licensed designs. The cost of Cricut Access is \$9.99 USD per month or \$95.88 USD per year (which works out to be \$7.99 per month). Yes, the Cricut Maker 3/Explore 3 has Bluetooth capabilities. It can be paired with various devices like a MacBook Air, iPad, iPhone or Windows computer over Bluetooth. Additionally, you can use USB for setup and connection if you prefer that method. Cricut is a line of cutting machines that are used to make crafts and other projects. It offers users the ability to create intricate and detailed designs with ease. It has a wide range of materials that can be used, including paper, fabric, vinyl, and more. Cricut also offers users access to a library of pre-made designs for added convenience. With its user-friendly design software and a variety of customizable options, Cricut is an ideal choice for anyone who wants to create unique projects quickly and easily. This article may contain affiliate links (disclosure policy). 1 - Make sure your Cricut Explore or Cricut Maker machine is turned on and within 10-15 feet of your computer. If you have a Cricut Explore or Cricut Explore One, make sure your wireless Bluetooth adapter is inserted.2 - Most computers are Bluetooth enabled. However, to determine if your computer is Bluetooth-enabled, right-click the Start button and select Device Manager.3 - If the Bluetooth device appears in the list, your computer is Bluetooth enabled. If it does not appear, you may need to install a Bluetooth adapter.4 - Once you have confirmed that your computer is Bluetooth-enabled, you should be able to connect to your Cricut machine.5 - If you are having trouble connecting, you can always use the USB cable that came with your Cricut machine to connect directly to your computer and cut your designs. See also: Setup Game iOS. A Thriving Hit Around the World Cricut Design Space is compatible with Windows, Mac, Android, and iOS devices. On Android, you'll need a device with Android 4.4 or higher, while on iOS devices you'll need an iPhone 5s or later, running iOS 11 or higher. For Windows computers, you'll need Windows 7 or later and an internet connection. On Macs, you'll need OS X 10.11 (El Capitan) or later and an internet connection. You can also use certain Samsung Galaxy devices (S series, Note series, Tab A series and Tab S series), Google Pixel devices, LG G/K/V series devices and Motorola Droid/G/Z/E/Turbo/Moto series devices to access Cricut Design Space. To turn on Bluetooth on your Cricut Explore 3, first connect your machine to the computer using a USB cable. Once connected, open up Command Prompt and type in "Bluetooth" followed by "power on". This will enable Bluetooth on your machine. Next, open up Devices in your settings and the Cricut Explore 3 should appear in the list of Bluetooth devices. Finally, click on the device in the list and select "Connect" to pair it with your computer. Now you can use Bluetooth with your Cricut Explore! 3 The USB port on the Cricut Maker is used for connecting your computer to the machine. This allows you to access designs, fonts, images and projects from your computer for cutting and writing with your Cricut Maker. You can also use the USB port to update the firmware of your machine wirelessly without having to connect a separate device such as a laptop or tablet. To turn on your Cricut Bluetooth, open the Settings app on your device. You can access it from your Apps screen or by swiping down from the top of your screen. Once the Settings app is open, tap Bluetooth from the left pane. If the Bluetooth communication is off, tap it to turn it on and enable the connection. Once you have enabled the connection, you should be able to connect with your Cricut machine. For optimal performance with your Cricut Maker, you'll need a computer that meets the following minimum requirements: Operating system: Windows 8 or later, CPU: Intel Core i3 or equivalent, RAM: 4GB or higher, RAM: 4GB or higher, Free disk space: 2GB of free disk space to store files and images used with the Cricut Maker. Connectivity: USB port or Bluetooth connection to connect your Cricut Maker to your computer. Display: 1024px x 768px screen resolution for easy viewing of the Cricut Maker interface. To use a Cricut smart cutting machine, you need to use the free software Design Space. It is available on Windows, Mac, iOS, and Android devices, and is easy to set up and use. With Design Space, you can design your own projects from scratch or choose from over 50,000 images in the Cricut library. You can also access a wide variety of materials for printing and cutting – like vinyl, paper, fabric, leather – and more. Additionally, Design Space provides helpful tutorials to guide you through your projects. Source: nymtes.com The best device to use with a Cricut is the Samsung Galaxy Tab S6 Lite. It has a powerful processor and enough RAM to handle any project you throw at it, plus its 10.4-inch screen gives you plenty of room to work with. Its long-lasting battery life ensures you can use it for hours without needing to recharge, and its lightweight design makes it perfect for taking with you wherever you go. Plus, it has a built-in stylus that works great for precise drawing and cutting. All in all, this tablet offers everything you need for Cricut projects. See also: How to Manage Files Easily with an iPad File Manager? To connect your Cricut to your computer via USB, you will need a USB cable that is compatible with your device. Start by plugging one end of the USB cable into your Cricut and the other end into your computer. Once connected, you will need to download and install Design Space for Desktop. Visit design.cricut.com/setup in your browser to get started. Follow the instructions to either create a Cricut ID or log in if you already have an account. Once logged in, continue with the setup process until your machine is ready to use. It sounds like your Cricut isn't connecting to your Mac due to an outdated Bluetooth configuration. To make sure the connection is made, you will need to reset your Bluetooth configuration, as well as update the firmware on your Cricut and ensure that your MacBook has the latest version of Bluetooth. Once all these steps have been completed, you should be able to connect Cricut to your Mac. Yes, you can use any laptop to use Cricut. The Cricut Design Space software is compatible with Windows, Mac, iOS, and Android operating systems. However, if you're using a laptop with an older OS mode, you will need to switch it out of S mode in order to be able to install the Cricut Design Space software. Once you have switched out of S mode, you can easily download and use the software on your laptop. Laptops running Google's Chrome operating system, such as Chromebooks, are not compatible with Cricut Design Space. Cricut Design Space requires either a Windows or Mac operating system when used on a laptop or desktop computer. No, you do not have to pay for Cricut Access. You can use Cricut Design Space, the free software for creating and uploading designs to cut on your Cricut machine, without a subscription. However, if you decide to subscribe to Cricut Access, you will gain access to thousands of images and fonts free of charge, as well as discounts on licensed designs. The cost of Cricut Access is \$9.99 USD per month or \$95.88 USD per year (which works out to be \$7.99 per month). Yes, the Cricut Maker 3/Explore 3 has Bluetooth capabilities. It can be paired with various devices like a MacBook Air, iPad, iPhone or Windows computer over Bluetooth. Additionally, you can use USB for setup and connection if you prefer that method. Cricut is a line of cutting machines that are used to make crafts and other projects. It offers users the ability to create intricate and detailed designs with ease. It has a wide range of materials that can be used, including paper, fabric, vinyl, and more. Cricut also offers users access to a library of pre-made designs for added convenience. With its user-friendly design software and a variety of customizable options, Cricut is an ideal choice for anyone who wants to create unique projects quickly and easily. This article may contain affiliate links (disclosure policy). 1 - Make sure your Cricut Explore or Cricut Maker machine is turned on and within 10-15 feet of your computer. If you have a Cricut Explore or Cricut Explore One, make sure your wireless Bluetooth adapter is inserted.2 - Most computers are Bluetooth enabled. However, to determine if your computer is Bluetooth-enabled, right-click the Start button and select Device Manager.3 - If the Bluetooth device appears in the list, your computer is Bluetooth enabled. If it does not appear, you may need to install a Bluetooth adapter.4 - Once you have confirmed that your computer is Bluetooth-enabled, you should be able to connect to your Cricut machine.5 - If you are having trouble connecting, you can always use the USB cable that came with your Cricut machine to connect directly to your computer and cut your designs. See also: Setup Game iOS. A Thriving Hit Around the World Cricut Design Space is compatible with Windows, Mac, Android, and iOS devices. On Android, you'll need a device with Android 4.4 or higher, while on iOS devices you'll need an iPhone 5s or later, running iOS 11 or higher. For Windows computers, you'll need Windows 7 or later and an internet connection. On Macs, you'll need OS X 10.11 (El Capitan) or later and an internet connection. You can also use certain Samsung Galaxy devices (S series, Note series, Tab A series and Tab S series), Google Pixel devices, LG G/K/V series devices and Motorola Droid/G/Z/E/Turbo/Moto series devices to access Cricut Design Space. To turn on Bluetooth on your Cricut Explore 3, first connect your machine to the computer using a USB cable. Once connected, open up Command Prompt and type in "Bluetooth" followed by "power on". This will enable Bluetooth on your machine. Next, open up Devices in your settings and the Cricut Explore 3 should appear in the list of Bluetooth devices. Finally, click on the device in the list and select "Connect" to pair it with your computer. Now you can use Bluetooth with your Cricut Explore! 3 The USB port on the Cricut Maker is used for connecting your computer to the machine. This allows you to access designs, fonts, images and projects from your computer for cutting and writing with your Cricut Maker. You can also use the USB port to update the firmware of your machine wirelessly without having to connect a separate device such as a laptop or tablet. To turn on your Cricut Bluetooth, open the Settings app on your device. You can access it from your Apps screen or by swiping down from the top of your screen. Once the Settings app is open, tap Bluetooth from the left pane. If the Bluetooth communication is off, tap it to turn it on and enable the connection. Once you have enabled the connection, you should be able to connect with your Cricut machine. For optimal performance with your Cricut Maker, you'll need a computer that meets the following minimum requirements: Operating system: Windows 8 or later, CPU: Intel Core i3 or equivalent, RAM: 4GB or higher, RAM: 4GB or higher, Free disk space: 2GB of free disk space to store files and images used with the Cricut Maker. Connectivity: USB port or Bluetooth connection to connect your Cricut Maker to your computer. Display: 1024px x 768px screen resolution for easy viewing of the Cricut Maker interface. To use a Cricut smart cutting machine, you need to use the free software Design Space. It is available on Windows, Mac, iOS, and Android devices, and is easy to set up and use. With Design Space, you can design your own projects from scratch or choose from over 50,000 images in the Cricut library. You can also access a wide variety of materials for printing and cutting – like vinyl, paper, fabric, leather – and more. Additionally, Design Space provides helpful tutorials to guide you through your projects. Source: nymtes.com The best device to use with a Cricut is the Samsung Galaxy Tab S6 Lite. It has a powerful processor and enough RAM to handle any project you throw at it, plus its 10.4-inch screen gives you plenty of room to work with. Its long-lasting battery life ensures you can use it for hours without needing to recharge, and its lightweight design makes it perfect for taking with you wherever you go. Plus, it has a built-in stylus that works great for precise drawing and cutting. All in all, this tablet offers everything you need for Cricut projects. See also: How to Manage Files Easily with an iPad File Manager? To connect your Cricut to your computer via USB, you will need a USB cable that is compatible with your device. Start by plugging one end of the USB cable into your Cricut and the other end into your computer. Once connected, you will need to download and install Design Space for Desktop. Visit design.cricut.com/setup in your browser to get started. Follow the instructions to either create a Cricut ID or log in if you already have an account. Once logged in, continue with the setup process until your machine is ready to use. It sounds like your Cricut isn't connecting to your Mac due to an outdated Bluetooth configuration. To make sure the connection is made, you will need to reset your Bluetooth configuration, as well as update the firmware on your Cricut and ensure that your MacBook has the latest version of Bluetooth. Once all these steps have been completed, you should be able to connect Cricut to your Mac. Yes, you can use any laptop to use Cricut. The Cricut Design Space software is compatible with Windows, Mac, iOS, and Android operating systems. However, if you're using a laptop with an older OS mode, you will need to switch it out of S mode in order to be able to install the Cricut Design Space software. Once you have switched out of S mode, you can easily download and use the software on your laptop. Laptops running Google's Chrome operating system, such as Chromebooks, are not compatible with Cricut Design Space. Cricut Design Space requires either a Windows or Mac operating system when used on a laptop or desktop computer. No, you do not have to pay for Cricut Access. You can use Cricut Design Space, the free software for creating and uploading designs to cut on your Cricut machine, without a subscription. However, if you decide to subscribe to Cricut Access, you will gain access to thousands of images and fonts free of charge, as well as discounts on licensed designs. The cost of Cricut Access is \$9.99 USD per month or \$95.88 USD per year (which works out to be \$7.99 per month). Yes, the Cricut Maker 3/Explore 3 has Bluetooth capabilities. It can be paired with various devices like a MacBook Air, iPad, iPhone or Windows computer over Bluetooth. Additionally, you can use USB for setup and connection if you prefer that method. Cricut is a line of cutting machines that are used to make crafts and other projects. It offers users the ability to create intricate and detailed designs with ease. It has a wide range of materials that can be used, including paper, fabric, vinyl, and more. Cricut also offers users access to a library of pre-made designs for added convenience. With its user-friendly design software and a variety of customizable options, Cricut is an ideal choice for anyone who wants to create unique projects quickly and easily. This article may contain affiliate links (disclosure policy). 1 - Make sure your Cricut Explore or Cricut Maker machine is turned on and within 10-15 feet of your computer. If you have a Cricut Explore or Cricut Explore One, make sure your wireless Bluetooth adapter is inserted.2 - Most computers are Bluetooth enabled. However, to determine if your computer is Bluetooth-enabled, right-click the Start button and select Device Manager.3 - If the Bluetooth device appears in the list, your computer is Bluetooth enabled. If it does not appear, you may need to install a Bluetooth adapter.4 - Once you have confirmed that your computer is Bluetooth-enabled, you should be able to connect to your Cricut machine.5 - If you are having trouble connecting, you can always use the USB cable that came with your Cricut machine to connect directly to your computer and cut your designs. See also: Setup Game iOS. A Thriving Hit Around the World Cricut Design Space is compatible with Windows, Mac, Android, and iOS devices. On Android, you'll need a device with Android 4.4 or higher, while on iOS devices you'll need an iPhone 5s or later, running iOS 11 or higher. For Windows computers, you'll need Windows 7 or later and an internet connection. On Macs, you'll need OS X 10.11 (El Capitan) or later and an internet connection. You can also use certain Samsung Galaxy devices (S series, Note series, Tab A series and Tab S series), Google Pixel devices, LG G/K/V series devices and Motorola Droid/G/Z/E/Turbo/Moto series devices to access Cricut Design Space. To turn on Bluetooth on your Cricut Explore 3, first connect your machine to the computer using a USB cable. Once connected, open up Command Prompt and type in "Bluetooth" followed by "power on". This will enable Bluetooth on your machine. Next, open up Devices in your settings and the Cricut Explore 3 should appear in the list of Bluetooth devices. Finally, click on the device in the list and select "Connect" to pair it with your computer. Now you can use Bluetooth with your Cricut Explore! 3 The USB port on the Cricut Maker is used for connecting your computer to the machine. This allows you to access designs, fonts, images and projects from your computer for cutting and writing with your Cricut Maker. You can also use the USB port to update the firmware of your machine wirelessly without having to connect a separate device such as a laptop or tablet. To turn on your Cricut Bluetooth, open the Settings app on your device. You can access it from your Apps screen or by swiping down from the top of your screen. Once the Settings app is open, tap Bluetooth from the left pane. If the Bluetooth communication is off, tap it to turn it on and enable the connection. Once you have enabled the connection, you should be able to connect with your Cricut machine. For optimal performance with your Cricut Maker, you'll need a computer that meets the following minimum requirements: Operating system: Windows 8 or later, CPU: Intel Core i3 or equivalent, RAM: 4GB or higher, RAM: 4GB or higher, Free disk space: 2GB of free disk space to store files and images used with the Cricut Maker. Connectivity: USB port or Bluetooth connection to connect your Cricut Maker to your computer. Display: 1024px x 768px screen resolution for easy viewing of the Cricut Maker interface. To use a Cricut smart cutting machine, you need to use the free software Design Space. It is available on Windows, Mac, iOS, and Android devices, and is easy to set up and use. With Design Space, you can design your own projects from scratch or choose from over 50,000 images in the Cricut library. You can also access a wide variety of materials for printing and cutting – like vinyl, paper, fabric, leather – and more. Additionally, Design Space provides helpful tutorials to guide you through your projects. Source: nymtes.com The best device to use with a Cricut is the Samsung Galaxy Tab S6 Lite. It has a powerful processor and enough RAM to handle any project you throw at it, plus its 10.4-inch screen gives you plenty of room to work with. Its long-lasting battery life ensures you can use it for hours without needing to recharge, and its lightweight design makes it perfect for taking with you wherever you go. Plus, it has a built-in stylus that works great for precise drawing and cutting. All in all, this tablet offers everything you need for Cricut projects. See also: How to Manage Files Easily with an iPad File Manager? To connect your Cricut to your computer via USB, you will need a USB cable that is compatible with your device. Start by plugging one end of the USB cable into your Cricut and the other end into your computer. Once connected, you will need to download and install Design Space for Desktop. Visit design.cricut.com/setup in your browser to get started. Follow the instructions to either create a Cricut ID or log in if you already have an account. Once logged in, continue with the setup process until your machine is ready to use. It sounds like your Cricut isn't connecting to your Mac due to an outdated Bluetooth configuration. To make sure the connection is made, you will need to reset your Bluetooth configuration, as well as update the firmware on your Cricut and ensure that your MacBook has the latest version of Bluetooth. Once all these steps have been completed, you should be able to connect Cricut to your Mac. Yes, you can use any laptop to use Cricut. The Cricut Design Space software is compatible with Windows, Mac, iOS, and Android operating systems. However, if you're using a laptop with an older OS mode, you will need to switch it out of S mode in order to be able to install the Cricut Design Space software. Once you have switched out of S mode, you can easily download and use the software on your laptop. Laptops running Google's Chrome operating system, such as Chromebooks, are not compatible with Cricut Design Space. Cricut Design Space requires either a Windows or Mac operating system when used on a laptop or desktop computer. No, you do not have to pay for Cricut Access. You can use Cricut Design Space, the free software for creating and uploading designs to cut on your Cricut machine, without a subscription. However, if you decide to subscribe to Cricut Access, you will gain access to thousands of images and fonts free of charge, as well as discounts on licensed designs. The cost of Cricut Access is \$9.99 USD per month or \$95.88 USD per year (which works out to be \$7.99 per month). Yes, the Cricut Maker 3/Explore 3 has Bluetooth capabilities. It can be paired with various devices like a MacBook Air, iPad, iPhone or Windows computer over Bluetooth. Additionally, you can use USB for setup and connection if you prefer that method. Cricut is a line of cutting machines that are used to make crafts and other projects. It offers users the ability to create intricate and detailed designs with ease. It has a wide range of materials that can be used, including paper, fabric, vinyl, and more. Cricut also offers users access to a library of pre-made designs for added convenience. With its user-friendly design software and a variety of customizable options, Cricut is an ideal choice for anyone who wants to create unique projects quickly and easily. This article may contain affiliate links (disclosure policy). 1 - Make sure your Cricut Explore or Cricut Maker machine is turned on and within 10-15 feet of your computer. If you have a Cricut Explore or Cricut Explore One, make sure your wireless Bluetooth adapter is inserted.2 - Most computers are Bluetooth enabled. However, to determine if your computer is Bluetooth-enabled, right-click the Start button and select Device Manager.3 - If the Bluetooth device appears in the list, your computer is Bluetooth enabled. If it does not appear, you may need to install a Bluetooth adapter.4 - Once you have confirmed that your computer is Bluetooth-enabled, you should be able to connect to your Cricut machine.5 - If you are having trouble connecting, you can always use the USB cable that came with your Cricut machine to connect directly to your computer and cut your designs. See also: Setup Game iOS. A Thriving Hit Around the World Cricut Design Space is compatible with Windows, Mac, Android, and iOS devices. On Android, you'll need a device with Android 4.4 or higher, while on iOS devices you'll need an iPhone 5s or later, running iOS 11 or higher. For Windows computers, you'll need Windows 7 or later and an internet connection. On Macs, you'll need OS X 10.11 (El Capitan) or later and an internet connection. You can also use certain Samsung Galaxy devices (S series, Note series, Tab A series and Tab S series), Google Pixel devices, LG G/K/V series devices and Motorola Droid/G/Z/E/Turbo/Moto series devices to access Cricut Design Space. To turn on Bluetooth on your Cricut Explore 3, first connect your machine to the computer using a USB cable. Once connected, open up Command Prompt and type in "Bluetooth" followed by "power on". This will enable Bluetooth on your machine. Next, open up Devices in your settings and the Cricut Explore 3 should appear in the list of Bluetooth devices. Finally, click on the device in the list and select "Connect" to pair it with your computer. Now you can use Bluetooth with your Cricut Explore! 3 The USB port on the Cricut Maker is used for connecting your computer to the machine. This allows you to access designs, fonts, images and projects from your computer for cutting and writing with your Cricut Maker. You can also use the USB port to update the firmware of your machine wirelessly without having to connect a separate device such as a laptop or tablet. To turn on your Cricut Bluetooth, open the Settings app on your device. You can access it from your Apps screen or by swiping down from the top of your screen. Once the Settings app is open, tap Bluetooth from the left pane. If the Bluetooth communication is off, tap it to turn it on and enable the connection. Once you have enabled the connection, you should be able to connect with your Cricut machine. For optimal performance with your Cricut Maker, you'll need a computer that meets the following minimum requirements: Operating system: Windows 8 or later, CPU: Intel Core i3 or equivalent, RAM: 4GB or higher, RAM: 4GB or higher, Free disk space: 2GB of free disk space to store files and images used with the Cricut Maker. Connectivity: USB port or Bluetooth connection to connect your Cricut Maker to your computer. Display: 1024px x 768px screen resolution for easy viewing of the Cricut Maker interface. To use a Cricut smart cutting machine, you need to use the free software Design Space. It is available on Windows, Mac, iOS, and Android devices, and is easy to set up and use. With Design Space, you can design your own projects from scratch or choose from over 50,000 images in the Cricut library. You can also access a wide variety of materials for printing and cutting – like vinyl, paper, fabric, leather – and more. Additionally, Design Space provides helpful tutorials to guide you through your projects. Source: nymtes.com The best device to use with a Cricut is the Samsung Galaxy Tab S6 Lite. It has a powerful processor and enough RAM to handle any project you throw at it, plus its 10.4-inch screen gives you plenty of room to work with. Its long-lasting battery life ensures you can use it for hours without needing to recharge, and its lightweight design makes it perfect for taking with you wherever you go. Plus, it has a built-in stylus that works great for precise drawing and cutting. All in all, this tablet offers everything you need for Cricut projects. See also: How to Manage Files Easily with an iPad File Manager? To connect your Cricut to your computer via USB, you will need a USB cable that is compatible with your device. Start by plugging one end of the USB cable into your Cricut and the other end into your computer. Once connected, you will need to download and install Design Space for Desktop. Visit design.cricut.com/setup in your browser to get started. Follow the instructions to either create a Cricut ID or log in if you already have an account. Once logged in, continue with the setup process until your machine is ready to use. It sounds like your Cricut isn't connecting to your Mac due to an outdated Bluetooth configuration. To make sure the connection is made, you will need to reset your Bluetooth configuration, as well as update the firmware on your Cricut and ensure that your MacBook has the latest version of Bluetooth. Once all these steps have been completed, you should be able to connect Cricut to your Mac. Yes, you can use any laptop to use Cricut. The Cricut Design Space software is compatible with Windows, Mac, iOS, and Android operating systems. However, if you're using a laptop with an older OS mode, you will need to switch it out of S mode in order to be able to install the Cricut Design Space software. Once you have switched out of S mode, you can easily download and use the software on your laptop. Laptops running Google's Chrome operating system, such as Chromebooks, are not compatible with Cricut Design Space. Cricut Design Space requires either a Windows or Mac operating system when used on a laptop or desktop computer. No, you do not have to pay for Cricut Access. You can use Cricut Design Space, the free software for creating and uploading designs to cut on your Cricut machine, without a subscription. However, if you decide to subscribe to Cricut Access, you will gain access to thousands of images and fonts free of charge, as well as discounts on licensed designs. The cost of Cricut Access is \$9.99 USD per month or \$95.88 USD per year (which works out to be \$7.99 per month). Yes, the Cricut Maker 3/Explore 3 has Bluetooth capabilities. It can be paired with various devices like a MacBook Air, iPad, iPhone or Windows computer over Bluetooth. Additionally, you can use USB for setup and connection if you prefer that method. Cricut is a line of cutting machines that are used to make crafts and other projects. It offers users the ability to create intricate and detailed designs with ease. It has a wide range of materials that can be used, including paper, fabric, vinyl, and more. Cricut also offers users access to a library of pre-made designs for added convenience. With its user-friendly design software and a variety of customizable options, Cricut is an ideal choice for anyone who wants to create unique projects quickly and easily. This article may contain affiliate links (disclosure policy). 1 - Make sure your Cricut Explore or Cricut Maker machine is turned on and within 10-15 feet of your computer. If you have a Cricut Explore or Cricut Explore One, make sure your wireless Bluetooth adapter is inserted.2 - Most computers are Bluetooth enabled. However, to determine if your computer is Bluetooth-enabled, right-click the Start button and select Device Manager.3 - If the Bluetooth device appears in the list, your computer is Bluetooth enabled. If it does not appear, you may need to install a Bluetooth adapter.4 - Once you have confirmed that your computer is Bluetooth-enabled, you should be able to connect to your Cricut machine.5 - If you are having trouble connecting, you can always use the USB cable that came with your Cricut machine to connect directly to your computer and cut your designs. See also: Setup Game iOS. A Thriving Hit Around the World Cricut Design Space is compatible with Windows, Mac, Android, and iOS devices. On Android, you'll need a device with Android 4.4 or higher, while on iOS devices you'll need an iPhone 5s or later, running iOS 11 or higher. For Windows computers, you'll need Windows 7 or later and an internet connection. On Macs, you'll need OS X 10.11 (El Capitan) or later and an internet connection. You can also use certain Samsung Galaxy devices (S series, Note series, Tab A series and Tab S series), Google Pixel devices, LG G/K/V series devices and Motorola Droid/G/Z/E/Turbo/Moto series devices to access Cricut Design Space. To turn on Bluetooth on your Cricut Explore 3, first connect your machine to the computer using a USB cable. Once connected, open up Command Prompt and type in "Bluetooth" followed by "power on". This will enable Bluetooth on your machine. Next, open up Devices in your settings and the Cricut Explore 3 should appear in the list of Bluetooth devices. Finally, click on the device in the list and select "Connect" to pair it with your computer. Now you can use Bluetooth with your Cricut Explore! 3 The USB port on the Cricut Maker is used for connecting your computer to the machine. This allows you to access designs, fonts, images and projects from your computer for cutting and writing with your Cricut Maker. You can also use the USB port to update the firmware of your machine wirelessly without having to connect a separate device such as a laptop or tablet. To turn on your Cricut Bluetooth, open the Settings app on your device. You can access it from your Apps screen or by swiping down from the top of your screen. Once the Settings app is open, tap Bluetooth from the left pane. If the Bluetooth communication is off, tap it to turn it on and enable the connection. Once you have enabled the connection, you should be able to connect with your Cricut machine. For optimal performance with your Cricut Maker, you'll need a computer that meets the following minimum requirements: Operating system: Windows 8 or later, CPU: Intel Core i3 or equivalent, RAM: 4GB or higher, RAM: 4GB or higher, Free disk space: 2GB of free disk space to store files and images used with the Cricut Maker. Connectivity: USB port or Bluetooth connection to connect your Cricut Maker to your computer. Display: 1024px x 768px screen resolution for easy viewing of the Cricut Maker interface. To use a Cricut smart cutting machine, you need to use the free software Design Space. It is available on Windows, Mac, iOS, and Android devices, and is easy to set up and use. With Design Space, you can design your own projects from scratch or choose from over 50,000 images in the Cricut library. You can also access a wide variety of materials for printing and cutting – like vinyl, paper, fabric, leather – and more. Additionally, Design Space provides helpful tutorials to guide you through your projects. Source: nymtes.com The best device to use with a Cricut is the Samsung Galaxy Tab S6 Lite. It has a powerful processor and enough RAM to handle any project you throw at it, plus its 10.4-inch screen gives you plenty of room to work with. Its long-lasting battery life ensures you can use it for hours without needing to recharge, and its lightweight design makes it perfect for taking with you wherever you go. Plus, it has a built-in stylus that works great for precise drawing and cutting. All in all, this tablet offers everything you need for Cricut projects. See also: How to Manage Files Easily with an iPad File Manager? To connect your Cricut to your computer via USB, you will need a USB cable that is compatible with your device. Start by plugging one end of the USB cable into your Cricut and the other end into your computer. Once connected, you will need to download and install Design Space for Desktop. Visit design.cricut.com/setup in your browser to get started. Follow the instructions to either create a Cricut ID or log in if you already have an account. Once logged in, continue with the setup process until your machine is ready to use. It sounds like your Cricut isn't connecting to your Mac due to an outdated Bluetooth configuration. To make sure the connection is made, you will need to reset your Bluetooth configuration, as well as update the firmware on your Cricut and ensure that your MacBook has the latest version of Bluetooth. Once all these steps have been completed, you should be able to connect Cricut to your Mac. Yes, you can use any laptop to use Cricut. The Cricut Design Space software is compatible with Windows, Mac, iOS, and Android operating systems. However, if you're using a laptop with an older OS mode, you will need to switch it out of S mode in order to be able to install the Cricut Design Space software. Once you have switched out of S mode, you can easily download and use the software on your laptop. Laptops running Google's Chrome operating system, such as Chromebooks, are not compatible with Cricut Design Space. Cricut Design Space requires either a Windows or Mac operating system when used on a laptop or desktop computer. No, you do not have to pay for Cricut Access. You can use Cricut Design Space, the free software for creating and uploading designs to cut on your Cricut machine, without a subscription. However, if you decide to subscribe to Cricut Access, you will gain access to thousands of images and fonts