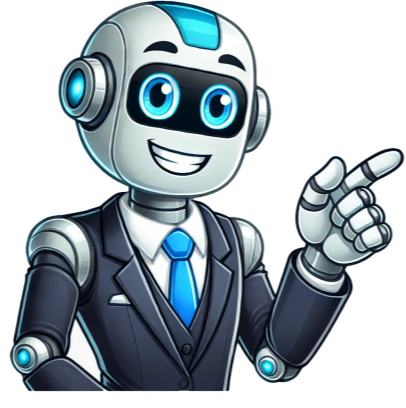


Continue





























86%(7)86% found this document useful (7 votes)35K viewsThis document contains a worksheet with multiple problems involving gas laws including Boyle's law, Charles' law, Guy-Lussac's law, Avogadro's law, and the combined gas law. The problems covSaveSave Gas Laws Worksheet Answer Key For Later86%86% found this document useful, undefined86%(7)86% found this document useful (7 votes)35K viewsThis document contains a worksheet with multiple problems involving gas laws including Boyle's law, Charles' law, Guy-Lussac's law, Avogadro's law, and the combined gas law. The problems covThis set of worksheets was handy when I had to have a sub, and my students found it engaging, and the practice helped them prepare for the unit test.Strongly disagreeStrongly agreeMy students are always thankful for well organized practice problems.Strongly disagreeStrongly agreeThank you! I'm glad it is helpful for your class!Thank you! My students get practice and I save time by not having to type it up myself...win-win.You're welcome! I'm so glad this saved you time!Chemistry Distance Learning GROWING Bundle - New Products Coming!This growing bundle includes all chemistry digital decor (banners, buttons, and posters), Google Slides presentations, worksheets, task cards, and color-by-numbers currently available in my store. The beauty of purchasing a growing bundle is that you don't pay for additional products included in the\$158.40Price \$158.40\$198.00Original Price \$198.00Save \$39.60 Related Tools User GuideFormulasP1V1T1P2V2T2User GuideThis tool will calculate any parameter from the equation for the combined gas law  $PV/T = PV/T$  which is derived by combining Boyles, Charles and Gay-Lussacs law, and includes P1 gas pressure, V1 gas volume, T1 gas temperature, P2 gas pressure, V2 gas volume and T2 gas temperature.The combined gas law explains that for an ideal gas, the absolute pressure multiplied by the volume of the gas is directly proportional to the gas temperature, if the amount of gas remains constant.FormulasThe combined gas law is explained with math in the following ways.The pressure multiplied by the volume of an ideal gas is proportional to its temperature: $P V T$ The pressure multiplied with the volume, and divided by the temperature of an ideal gas in a given state, equals a constant value: $P V / T = \text{Constant}$ The multiplying together of the pressure and volume, and dividing by the temperature of an ideal gas in one state, equals the multiplying of the pressure and volume, and dividing by the temperature of an ideal gas in another state, as long as the quantity of gas does not change between the two states. $P1 V1 / T1 = P2 V2 / T2$ The formulas used by this combine gas law calculator to determine each individual parameter are: $P1 = P2 V2 T1 / (V1 T2)$  $V1 = P2 V2 T1 / (P1 T2)$  $T1 = P1 V1 T2 / (P2 V2)$  $P2 = P1 V1 T2 / (V2 T1)$  $V2 = P1 V1 T2 / (P2 T1)$  $T2 = P2 V2 T1 / (P1 V1)$ SymbolsP1 = Pressure of the first gas stateV1 = Volume of the first gas stateT1 = Temperature of the first gas stateP2 = Pressure of the second gas stateV2 = Volume of the second gas stateT2 = Temperature of the second gas stateP1This is the absolute pressure of the first gas state.V1This is the total volume occupied by the first gas state.T1This is the temperature of the first gas state.P2This is the absolute pressure of the second gas state.V2This is the total volume occupied by the second gas state.T2This is the temperature of the second gas state.

**Combined gas law problems worksheet with answers. Gas laws worksheet combined gas laws answer key. Combined gas law practice worksheet answer key. The combined gas law worksheet answer key. Combined gas law worksheet answers pdf.**