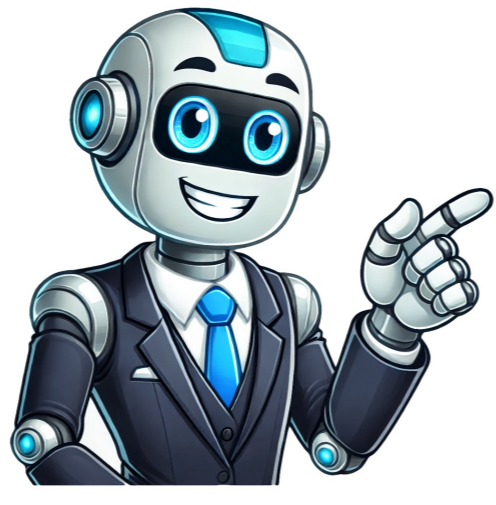


[Click Here](#)



Nintendo Switch exclusives Pokemon Let's Go Pikachu and Pokemon Let's Go Eevee are already two of the biggest games of the year. Nintendo is expecting the titles to help shift a lot of Switch consoles, having also released Pokemon Let's Go Switch bundles. But those who don't have - or cannot afford - a Nintendo Switch, there may be an unofficial workaround. Pokemon Let's Go has become playable on PC through a Nintendo Switch emulator called Yuzu1567. A YouTube video shows Pokemon Let's Go Pikachu running on the Canary build of the Yuzu emulator, which is the version with all of the latest bug fixes. However, this build, like the Yuzu emulator in general, still contains technical issues that make this far from a perfect, native-Switch-quality experience. For example, the audio in the video below sounds completely bizarre. Not only does it sound sped up but it is out of sync with the gameplay as well. It also sounds like it's buzzing, a bit like listening to a song without having plugged the headphones in correctly. That's not the only issue either, as the text is displayed in black blocks and therefore cannot be read. For those who like to whizz through the Pokemon games, ignoring the lore and all narrative context this won't be a problem. Walkthroughs on how to overcome obstacles and complete objectives in the game can also be found online. Experienced players will also recognize Pokemon and know their names without having to read the on-screen text. But even so, it's a jarring experience. Overall though, most will agree that the game runs quite smoothly. The game's graphics all seem to have been preserved in the emulator and the Pokemon catching system seems to work fine as well. Pokemon fans on PC are hopeful that a playable build will be released within the next few months or so. The Nintendo Switch has sold millions of units around the world already. The release of the Pokemon Let's Go games and the recent Black Friday and Cyber Monday sales that discounted the Switch will increase those even more. As such, the emulated PC version of Pokemon Let's Go is unlikely to bother Nintendo's bottom line very much. However, Nintendo is notoriously strict when it comes to enforcing its copyright, including YouTube takedown requests and filing lawsuits against emulator sites. As such, it's unclear what will happen with this one. Pokemon Let's Go is available exclusively on Nintendo Switch. Source: Unreal - YouTube (via Kotaku) Pokemon Let's Go, easily one of the year's biggest releases exclusive to the Nintendo Switch, can be run on PC using the experimental open-source Yuzu emulator. Built by the people behind 3DS emulator Citra, and supporting both Windows and Linux, Yuzu runs Pokémon Let's Go surprisingly well, considering how close we are to the title's release. As is often the case with emulation, things aren't quite at the point where Pokémon Let's Go can be optimally played on PC. The current build contains distorted audio, turning the game's welcoming music into something more befitting of a horror film, alongside unreadable text and increased character speed in situations when the frame rate spikes. Be that as it may, it's quite the feat, leaving some space to hope that one day Pokémon Let's Go might be entirely playable on PC. Should you want to give Yuzu a closer look, you can do so by visiting the emulator's website. The video below shows Pokémon Let's Go in action on PC. Pokémon: Let's Go Pikachu is a Nintendo Switch game and is not officially available to play on PC. However, there are ways to emulate the Nintendo Switch on a PC and play Pokemon: Let's Go Pikachu. Which emulator can play Let's Go Pikachu? Step 1: Download DrasticNX on your Android. Just download the APK file of the emulator and follow a simple click-through process to complete the installation. Similarly, you can do Pokemon: Let's Go Pikachu PC download using the Yuzu emulator for Mac or Windows. How do you access the PC in Pokémon Let's go? Keep in mind that there is no longer a PC in the Pokémon Center — you can access your extra Pokémon by checking out the Pokémon Box option from the Party or Bag menu, even when you're not in a Pokémon Center. The Poké Mart sells items such as Poké Balls and Potions. Can we play Pokémon Let's go Pikachu on Citra emulator? Pokémon: Let's Go Eevee & Pikachu are available for the Switch only and are therefore incompatible with the Citra emulator. Citra is an emulator for the 3DS, so you should instead look for a Switch emulator OR 3DS Pokémon titles that are compatible with Citra. Where can I play Pokémon Let's go Pikachu? Partner up with Pikachu to catch and collect Pokémon on a rich and vibrant adventure in the Pokémon™: Let's Go, Pikachu! game - available now on the Nintendo Switch™ system! How to Play Pokémon Let's Go Eevee/Pikachu on PC [Full Speed] (Yuzu Switch Emulator) How do I download lets go Pikachu on my phone? Pokemon Let's Go Pikachu Download for Android, How to Do Step 1: Download DrasticNX on your Android. Step 2: Buy the Let's Go Pikachu game. Step 3: Start playing Let's Go Pikachu. Is Let's Go Pikachu only Kanto? Pokémon: Let's Go, Pikachu! and Let's Go, Eevee! are set in the Kanto region and include the original 151 Pokémon in addition to their respective Mega Evolved forms from Pokémon X, Y, Omega Ruby and Alpha Sapphire and their Alolan Forms from Pokémon Sun and Moon. Can my PC run Citra emulator? Which platforms does Citra support? We're pleased to say that Citra works on all three major desktop operating systems and Android! Citra is actively tested and supported on various 64-bit version of Windows (10 and up), Linux and Android (9.0 - Pie or newer). Other platforms may work, but aren't tested by developers. Is Citra a Nintendo Switch emulator? Citra is a free and open-source emulator of the handheld Nintendo 3DS for Windows, macOS, Linux, and Android. How to play Pokemon on PC without switch? You can do so using ROMs and emulators. ROMs are digital duplicates of game cartridges, while emulators are applications that simulate game consoles. You'll need to download a separate emulator for each game console you want to simulate on your PC. How do I get past Viridian City? Pokémon Let's Go: Viridian City on your first visit. You won't be able to get past until delivering a parcel to Professor Oak, back in Pallet Town. Speaking of which, to pick up the parcel talk to the Poké Mart Clerk, in the apron, to get the parcel itself and the objective of delivering it to Professor Oak back south. Can you play as a girl in Let's Go Pikachu? No. You may play as a boy or girl when selecting an avatar. What emulator can run Switch games? yuzu is an experimental open-source emulator for the Nintendo Switch from the creators of Citra. Is it illegal to play Pokémon on an emulator? Emulators are legal; even though, they are almost always used to facilitate illegal ROM game playing. What is the best emulator for Pokémon Let's go Pikachu PC? However, there are ways to emulate the Nintendo Switch on a PC and play Pokemon: Let's Go Pikachu. One option is to use the Yuzu emulator, which is a Nintendo Switch emulator that can run on a PC. Is it legal to use an emulator? On its own, the possibility of playing older games in whichever environment you please sounds like a nice option to have. But while emulators are free and legal, ROMs are not. Did Let's Go Pikachu or Eevee sell more? Breaking down sales by each version of the game, Pokémon: Let's Go, Pikachu! was the best-selling version with 1,555,702 units sold (60%), while Pokémon: Let's Go, Eevee! sold 1,056,433 units (40%). Are all 151 Pokémon in Let's Go Pikachu? Pokemon Let's Go is based on the first generation and therefore the first 151 Pokemon. However, there is an exception to this. A new Pokemon has been discovered and its called Meltan. Meltan also has an evolved form Melmetal. Reddit and its partners use cookies and similar technologies to provide you with a better experience. By accepting all cookies, you agree to our use of cookies to deliver and maintain our services and site, improve the quality of Reddit, personalize Reddit content and advertising, and measure the effectiveness of advertising. By rejecting non-essential cookies, Reddit may still use certain cookies to ensure the proper functionality of our platform. For more information, please see our Cookie Notice and our Privacy Policy. A PC with Windows operating system A stable internet connection A legitimate copy of Pokémon Let's Go Pikachu ROM file A Nintendo Switch emulator A controller or keyboard for gameplay The first step is to download a reliable Nintendo Switch emulator that supports Pokémon Let's Go Pikachu. One popular option is the Yuzu emulator, which is compatible with Windows systems. Visit the official Yuzu website and download the emulator setup file. Run the file and follow the installation instructions. Once the installation is complete, you're ready to move on to the next step. Step 2: Obtain the Pokémon Let's Go Pikachu ROM File Next, you'll need to find a legitimate Pokémon Let's Go Pikachu ROM file. Keep in mind that downloading ROMs of games you don't already own is considered piracy and is illegal. Make sure you have a legitimate copy of the game before proceeding. Once you have the ROM file, save it to a location on your PC where you can easily access it later. Step 3: Configure the Emulator Open the Yuzu emulator on your PC. In the main menu, navigate to the "File" option and select "Load File". Browse your PC for the Pokémon Let's Go Pikachu ROM file you downloaded earlier and open it. In the emulator settings, you may need to adjust some options to optimize performance according to your PC's specifications. Experiment with different settings until you find the best configuration for your system. Step 4: Customize Controls Pokémon Let's Go Pikachu is best played using a controller, but you can also use a keyboard if that is more convenient for you. Open the emulator's input settings and set up your desired controls for gameplay. Step 5: Start Playing! Everything is now set up and prepared. It's time to embark on your Pokémon Let's Go Pikachu journey on PC! Launch the game from the emulator's main menu and begin your adventure. Remember to save your progress regularly to avoid losing any hard-earned achievements. Downloading and playing Pokémon Let's Go Pikachu on your PC is a great alternative for those who don't own a Nintendo Switch. By following this step-by-step guide, you'll be able to enjoy the Pokémon world right from your computer. Just make sure to stay within the legal boundaries and only use a legitimate copy of the game. Happy gaming! How helpful was this article? This page has been viewed 174 times Pokemon: Let's Go, Pikachu! and Pokemon: Let's Go, Eevee! introduce a new play style that anyone can enjoy, combined with the fun of collecting Pokémons. Pokemon: Let's Go, Pikachu! and Pokemon: Let's Go, Eevee! are based on Pokemon Yellow: Special Pikachu Edition, which first launched in Japan in 1998. These updated versions have been reimaged to make the most of the unique capabilities of the Nintendo Switch. The games also capture the fun of Pokemon GO and its intuitive Pokemon-catching mechanic. At the start of your tale, you will encounter either Pikachu or Eevee, depending on which game version you choose. This Pikachu or Eevee will join you as your partner in your adventures, growing together with you on your journey. Pikachu or Eevee will be with you wherever you go, either hanging on your shoulder or riding on your head. Don't let their adorable expressions fool you into thinking that cuteness is all they offer, though. Your partner will be a dependable ally in battle, too. In addition to determining your first partner Pokemon, there will be some differences in the species of Pokemon that you encounter and the rate at which you encounter them based on whether you choose Pokemon: Let's Go, Pikachu! or Pokemon: Let's Go, Eevee! The games utilize the abilities of the Nintendo Switch to add new and more accessible ways to experience Pokemon and play in the Pokemon universe. Even those who have never played the Pokemon series before will be able to dive right in--Pokemon: Let's Go, Pikachu! and Pokemon: Let's Go, Eevee! are easily approachable for newcomers to the series, but also have enough depth to keep veteran Trainers on their toes. The practice of catching Pokemon has been changed dramatically from previous titles. Now you can use your Nintendo Switch's Joy-Con to toss a Poke Ball at your target with one hand, either by pressing a button or flicking your wrist. With fewer buttons and intuitive action, it's never been simpler. Pokemon: Let's Go, Pikachu! and Pokemon: Let's Go, Eevee! also feature two-player simultaneous play. By sharing one of the Joy-Con controllers with a partner, two players can adventure at the same time. Throw Poke Balls together when you encounter Pokemon to boost your chances of successfully catching them, or have a friend lend a hand by joining you in battles against Trainers in your game. The below game entry is based on user submitted content. See a mistake? Want to contribute? Edit this article on GitHub Pokémon: Let's Go, Pikachu! and Let's Go, Eevee! currently work very well! In order to have the best possible experience, please follow the instructions below: Dump and use your keys from your console following our quickstart guide. Under Controls, use the Handheld controller option. Please note that we do not advise using docked mode for this game. When docked, Pokémon Let's Go expects the user to use a single Joycon along with making use of its motion controls. Issues AMD GPU users who run Windows may experience graphical glitches in the game. They are caused by AMD's proprietary drivers, and therefore, you either need to wait for AMD to fix drivers, or install a Linux distribution (not recommended if you have no experience with Linux) and use Mesa drivers. Intel GPU users will not get reliable performance. Due to being integrated graphics is generally built on the efficiency and power saving perspective. Use of dedicated GPUs is highly recommended. Known Issues Title Created Last Updated Intermittent Eternal Freezes (softlocks) December 23, 2018 May 3, 2020 Synchronization error in applet state changed event softlock June 24, 2019 September 10, 2020 Missing HLE service command 'GetBleScanFilterParameter2' in 'IBtmUserCore' (bluetooth) September 21, 2019 November 4, 2019 DisconnectNpad getting called due to AcquireNpadStyleSetUpdateEventHandle September 24, 2019 August 27, 2020 Chinese and Korean fonts are displayed as ??? in Pokemon: Let's Go November 13, 2019 October 27, 2022 Compatibility Build Date Tested by Hardware Version Rating 01/5/2022 Snp_Games on 01/06/2022 11th Gen intel(R) Core(TM) i7-11370H @ 3.30GHz GeForce GTX 1650/PCIe/SSE2 Windows Mainline Build4377128 12/4/2021 phuclordrn on 12/05/2021 intel(R) Core(TM) i5-7500 CPU @ 3.40GHz NVIDIA GeForce GTX 1060 6GB Windows Mainline Buildaa92ca6 12/2/2021 phuclordrn on 12/02/2021 intel(R) Core(TM) i5-7500 CPU @ 3.40GHz NVIDIA GeForce GTX 1060 6GB Windows Mainline Build1855af2 01/13/2022 polln0501 on 01/15/2022 intel(R) Core(TM) i3-10100 CPU @ 3.60GHz intel(R) UHD Graphics 630 Windows Mainline Build28fa4c33 09/29/2021 VEGIT02029 on 09/29/2021 intel(R) Core(TM) i3-10100 CPU @ 3.60GHz NVIDIA GeForce GTX 1060 3GB Windows EarlyAccess Build5758498 09/30/2021 mini_jo on 10/01/2021 intel(R) Core(TM) i7-5820K CPU @ 3.00GHz Radeon RX Vega Windows EarlyAccess Build94b0256 01/17/2022 Alfarooq Almenghawi on 01/24/2022 AMD Ryzen 5 3450U with Radeon Vega Mobile Gfx AMD Radeon(TM) Graphics Windows Mainline Buildc5647b8 12/11/2021 on 12/11/2021 AMD Ryzen 5 3606 6-Core Processor NVIDIA GeForce GTX 1650/PCIe/SSE2 Windows Mainline Buildc56e14 10/20/2021 wizard on 10/23/2021 intel(R) Core(TM) i5-8400 CPU @ 2.80GHz NVIDIA GeForce RTX 3060 Ti/PCIe/SSE2 Windows Mainline Build2705a56 01/17/2022 Alfarooq Almenghawi on 01/24/2022 AMD Ryzen 5 3450U with Radeon Vega Mobile Gfx AMD Radeon(TM) Graphics Windows Mainline Buildc5647b8 Compatibility Great Game functions with minor graphical or audio glitches and is playable from start to finish. May require some workarounds. Release(s) 010003F003A34000 Pokémon Let's Go, easily one of the year's biggest releases exclusive to the Nintendo Switch, can be run on PC using the experimental open-source Yuzu emulator. Built by the people behind 3DS emulator Citra, and supporting both Windows and Linux, Yuzu runs Pokémon Let's Go surprisingly well, considering how close we are to the title's release. As is often the case with emulation, things aren't quite at the point where Pokémon Let's Go can be optimally played on PC. The current build contains distorted audio, turning the game's welcoming music into something more befitting of a horror film, alongside unreadable text and increased character speed in situations when the frame rate spikes. Be that as it may, it's quite the feat, leaving some space to hope that one day Pokémon Let's Go might be entirely playable on PC. Should you want to give Yuzu a closer look, you can do so by visiting the emulator's website. The video below shows Pokémon Let's Go in action on PC.