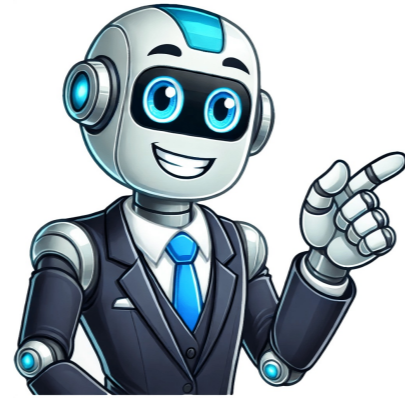


I'm not a robot



























Learn how to draw a great looking Spider Web with Spider with easy drawing instructions and video tutorial. By following the simple steps, you too can easily draw a perfect Spider Web with Spider. Get Free Printable COLORING PAGE of This Drawing Step-by-Step Instructions for Drawing a Spider Web with Spider 1. Begin the spider web with spider outline by drawing the straight lines of the radius - strands of web that go from the center of the web outward. Draw three of these lines, all emanating from a central point. You should have two triangular shapes. Then, draw straight and slightly curved lines between the radius lines at different angles. These strands are known as the web's spirals. 2. Draw two more straight radial lines extending from the center of the web, then draw the slightly curved lines of the spirals between them. You can draw another line halfway through one of the sections to show where the spider has made a repair to her web. 1,900+ drawing & coloring PDFs 50+ ebooks Ad-free website LEARN MORE 3. Extend three more straight lines from the center of the web. Notice that the lines on this side of the web are shorter and closer together. This helps give the web a three-dimensional appearance, with the wider side appearing closer. Connect the lines with the slightly curved spirals. 4. Extend three more long, straight lines from the center of the line. Connect the lines with slightly curved lines, and draw a straight line halfway down one segment. 5. Complete the spirals by drawing straight and slightly curved lines between the remaining radials. 6. Next, draw the spider, erasing lines of the web as necessary. Draw an egg-shaped oval for the spider's abdomen, and a smaller partial oval for the spider's head. 7. Draw the spider's legs, erasing the web as necessary. Spiders have eight legs, four on each side. Each leg should be made of three narrow, curved segments. The final segment of each leg - the spider's "feet" - should end in sharp points. Notice that one leg appears incomplete - it is bent out of sight. 8. Draw the spider's remaining legs, erasing as necessary. Again, use three curved segments for each leg, with the final segment ending at a sharp point. 9. Detail the spider's head and body. Sketch wavy lines down the abdomen, and shade many small "eyes" at the front of the head. Your spider web outline is now complete. Color your realistic spider with a web cartoon. We've shaded ours in various browns to resemble a grass spider or an American nursery web spider. Easy, step by step Spider Web with Spider drawing tutorial Click HERE to save the tutorial to Pinterest! Learn More About The Spider Web with Spider Drawing Eek! Is that how spiders make you feel? You can face your fears as you complete this spider on a spider web drawing with the help of this easy, step-by-step drawing tutorial. Spider webs are especially easy to draw. They consist of straight lines in a starburst pattern with shorter lines between them. Scroll down for a downloadable PDF of this tutorial. All spiders have a similar body shape. They have two oval-shaped segments - a large abdomen and a smaller head - as well as eight curved legs. If you enjoyed this creepy animal drawing guide, you can learn to draw even more types of spiders and their relatives. For example, learn how to draw a black widow spider or check out this scorpion drawing guide. Still seeing ads or not being able to download the PDF? First, check that you're logged in. You can log in on the member login page. If you're still not able to download the PDF, the likely solution is to reload the page. You can do this by clicking the browser reload button. It is a circular arrow-shaped icon at the top of the browser window, typically found in the upper-left side (you can also use keyboard shortcuts: Ctrl+R on PC and Command+R on Mac). We've been creating high-quality, easy-to-follow drawing tutorials since 2016. Rauno and the team of experienced artists are dedicated to helping people of all ages and skill levels learn to draw. We've carefully crafted over 1,900 step-by-step tutorials, ensuring that each one is safe, beginner-friendly, and engaging. We expand our library with new drawing guides every week, adding more drawing ideas and staying up-to-date with new trends. Our commitment to quality and accessibility has earned the trust of more than 1,700 satisfied paid members who have access to the huge library of drawing printables and ebooks, in addition to the regular step-by-drawing tutorials that are available for all readers. You can trust Easy Drawing Guides to provide you with some of the best drawing tutorials available online. Learn more about Rauno and Easy Drawing Guides. Spider webs are one of nature's most fascinating and intricate designs. Whether you're decorating for Halloween, adding flair to your art projects, or just improving your drawing skills, learning how to draw a spider web can be both fun and rewarding. This simple tutorial will guide you through each step, so even beginners can master the art of creating a perfect spider web. Spider webs are versatile elements in art. They can add drama, mystery, or even a sense of elegance to your drawings. From creating spooky Halloween themes to designing intricate tattoo art or learning basic symmetry, spider webs are an essential addition to any artist's toolkit. Plus, they're easy to learn, making them a great starting point for both kids and adults who are new to drawing. Before diving into the steps, gather these basic supplies to make your drawing experience smooth and enjoyable: Paper: Any drawing or sketch paper will work. Pencil: Use a sharp pencil for fine lines and light sketching. Ruler: This will help you create straight and precise lines. Eraser: For fixing mistakes or cleaning up your sketch. Black Marker or Pen: To outline your spider web for a bold and clean finish. Optional: Colored pencils or markers to add a unique touch to your web. Having these tools ready ensures you can focus entirely on the creative process. In this tutorial, you'll learn how to draw a spider web step by step, starting with basic guidelines and finishing with a realistic and symmetrical web. The process will teach you how to use structure, symmetry, and creativity to bring your spider web to life. Follow the steps below, and by the end of this guide, you'll have a stunning spider web that you can customize and incorporate into any art project. Whether you're drawing for fun or for a specific purpose, this tutorial will give you the skills to create with confidence! Time needed: 15 minutes Spider Web Step-by-Step Drawing Tutorial Draw the Vertical Line. Prepare the web. First, you need to draw the vertical line on your sheet, the length of the line will depend on the size of your paper, notebook, or canvas. Draw the Horizontal Line. Now draw the line of the same length, but horizontally. It should be a big "+" visually. Add the Diagonal Lines. Now draw two diagonal lines crossing the center. These lines will create eight equal sectors that will become the guides for your web. Depict the Center. Connect the lines by drawing a small polygon in the center. This will become the first inner circle of the web, from which it will begin to expand outward. Draw the Second Part of the Center. Add the next row of the web, connecting the lines a little further from the center. Try to keep an equal distance between this and the previous circle. Add the Last Row. Draw another web circle, placing it further from the center. All lines should connect smoothly to create the effect of a real web. Make the lines slightly curved for a realistic effect. Add the Final Touches. The final step is to emphasize the details by adding light strokes or shadows to make the web more realistic. This will add depth and complete your drawing. Now your web is ready! In conclusion, learning how to draw a spider's web is not only a fun and engaging artistic exercise, but it also provides a unique opportunity to observe and appreciate the intricate patterns of nature. The spider's web, with its delicate structure and symmetrical design, showcases the marvel of natural engineering and can serve as a reminder of the beauty that exists in even the smallest details of our environment. Through this lesson, you've gained the skills to represent a spider's web realistically, capturing its fine threads, circular shapes, and radial symmetry. The process requires patience and attention to detail, but with practice, you'll be able to bring the web to life on your paper, creating a realistic portrayal or even adding your own creative touch to the composition. Whether you're aiming for a more scientific or artistic representation, remember that each web is unique, just as each spider's creation is a work of art in itself. Keep experimenting with different techniques, textures, and angles to make your web stand out. And remember, art is not just about replicating what you see, but also about expressing your own perspective and creativity. So, the next time you encounter a spider's web in nature, take a moment to admire the complexity of its design, knowing that you now have the tools to recreate this natural masterpiece in your own way. Spider web drawing tutorial, where you learn to spin a simple spider web, and then break up the perfect web with some irregularities for a more natural look. Spider web drawing - an easy semi-realistic web - step-by-step drawing tutorial featured image Spider web drawing is fairly simple once you know where to start. In today's tutorial, we will learn how to draw a nice and easy spider web step-by-step. And since most of the spider webs you will see in nature do have a few holes and patches, we will then learn how to add some "mistakes" and irregularities to our perfect drawing, to make the spider web look more natural. Spider web drawing - step by step Spider web drawing: break the perfection Here are few more ways to draw a spider: Spider web drawing: finished drawing Like this tutorial? Share the fun with others: Last Updated on March 21, 2023 by DeeHave you ever tried to draw a spider web? They can be tricky because they're so delicate and intricate. But with a few simple steps, you'll be able to create your own spider web drawing or cobweb drawing masterpiece in no time! If you have been wondering how to draw spider webs, in this blog post, I'll show you three different ways to draw a spider web step by step. So whether you're an experienced artist or just starting out, there's sure to be a method here that works for you. Let's get started! Spider-web drawings can easily be done when one is familiar with the basics. This drawing tutorial focuses on drawing a realistic spider web step-by-step. It is important to remember to start your spider web drawing using a 2B pencil. This pencil is soft enough for you to achieve a mark without pressing too hard. I recommend that whenever you start drawing you should start off softly. Working in this way will make it easy to erase any mistake you make without leaving marks on the page. To make your spider web drawing easy, start off working on a few strands of the web at a time. In this way, your drawing will look as if more effort was put into it and it will definitely appear more realistic. \*\*This page may contain affiliate links to products I have used or recommend. If you purchase something from this page, I may receive a small percentage of the sale at no extra cost to you.\*\* The first thing you'll need to know how to do is to draw spider webbing. Spider web drawings can be created in many different ways, but the most common way to draw a spider web is to use a series of curves and lines that are closely spaced together. Later on, in this article, I will also include some steps on how to draw a spider on your webbing. Step 1: Draw an irregular circle Start your web as a spider does, by beginning with an irregular shape. It is almost a hexagon, but not quite. The shape must not be perfect and the lines can be a bit wobbly. There are, of course, very perfect spider webs in nature, but if you want to do a realistic spider web drawing, you should add some imperfect lines. Step 2: Draw diagonal lines shooting off the center Draw 6 freehand lines coming off the irregular shape you drew in the middle of your page. These start to form the structure of your web, and they are essentially the lines that secure your web to a surface. Step 3: Draw in another 7 spider web lines Add 7 lines shooting out from the center shape so as to add structure to the spider web. Step 4: Create an irregular concentric shape around the center Draw wavy lines linking one structural spider web line to the next. This will form an irregular concentric circle that starts giving us a sense of the spider web developing. Step 5: Add another irregular concentric shape In this same manner as the previous step, draw another irregular concentric shape. You can leave quite a bit of space between the two concentric shapes because a realistic spider web tends to have holes or spaces between the lines, and sometimes those spaces are extended. This gives us a sense of sticky and wispy cobwebs. Step 6: Draw more irregular cobwebs Continue to sketch in more and more lines to build up your spider web drawing. Once again, don't try to make it symmetrical or evenly spaced. Keep the space irregular. Step 7: Add more lines to the edges of the cobweb Continue to draw in more lines to build up your spider web drawing. Step 8: Last detail to the center of the spider web drawing Finally, add some small line details to the inside shape of the spider web drawing to finish it off. What would a spider web be without a spider right? If you're looking to add a spider drawing to your web then follow the steps below. Spiders are incredible creatures, and they've fascinated humans for thousands of years. It's estimated that there are more than 40,000 species of spider living on earth today - and the number is constantly increasing. Spiders play an important role in our environment because they help control populations of other insects like flies and mosquitoes, which can carry diseases like malaria. Spiders and their webs are quite incredible and very beautiful. For this next step-by-step drawing tutorial, I have decided to add one single spider with a spherical body and eight legs. This particular spider shape gives us the impression of a button spider. I will be placing the spider off-center to the right-hand side so that the picture is balanced well. Step 1: Draw a vertical line attached to a large circle and a small circle. Step 2: Sketch in 8 legs from the center of the large circle. The spider legs spread outward and taper off into sharp ends. Make sure to shade your spider black. As you can see from the tutorials above, there are many ways to do a spider web drawing. The step-by-step tutorial below will show you how to draw an easy spider web in 4 simple steps! Step 1: Draw a circle in the middle of your paper. Step 2: Draw 8 diagonal lines coming off the center circle. Step 3: Connect the lines with wavy lines to develop the spider web effect. Step 4: Fill out your spider web with more lines. Step 5: Add more lines to define the edges of the cobweb. Perhaps you are wondering how to draw spider webs in a corner... To follow my spider web drawing tutorials, you will need some supplies to get started! These are my recommendations based on what I use. A higher number pencil will give you more control over the darkness of your lines, while a harder/lower number will produce lighter lines. I used a 2B graphite pencil for these spider web drawing tutorials, but you can use other levels depending on your preference. When you are experimenting with different levels of darkness in your lines, it is important to have a pencil sharpener on hand. This will enable you to produce fine lines for detailed work and shading. You may find using a grip helps you gain more control over your drawing. A kneaded eraser is important, as you will need it to erase finer details and make corrections. Heavyweight drawing paper or A3 sketch pad. (Check out my article on Choosing the Right Mixed Media Sketchbook) Of course, you can also use an iPad and Procreate to create an amazing piece of digital art too! [Check out my article on the best iPad for Procreate!] With these step-by-step tutorials, you will be able to start creating your own spider web drawing in no time! Once you have mastered the art of drawing spider webs, try adding spiders for an extra touch. Spiders can really bring your spider web drawings to life! Have fun with it and happy drawing! [How to Draw a Mushroom in 15 Easy Steps] [Free Bat Template Printables] [Wolf Drawing] [How to Draw a Mushroom] [3 Simple Steps to Create an Outline Drawing] [12 Easy Steps to an Accurate Side-Profile Drawing] [Exquisite Rose Drawing] [How to Draw a Palm Tree] Crayola Metallic Markers (affiliate link) Crayola Metallic Markers\* Water-based. If your younger students haven't tried drawing with these on black paper before, they are in for a real treat. The color just pops off the page! Sharpie Metallic Marker\* Permanent, good for older students. Black Card Stock Paper\* It works better than construction paper. The surface is smooth, and the black is really black so you have maximum contrast with the marker color. \*are all Amazon affiliate links Time needed: 30 minutes Step by Step Spider Web Directions Choose center spot and draw about 9 lines out. Start drawing circles that drape from line to line. Add more rings, spacing each out a bit more. Draw a big fat spider somewhere, hanging from the web. How to Draw a Spider Halloween is the time of the year to draw all kinds of spooky stuff - spiderwebs certainly fit the bill so we'll learn how to draw a spiderweb. We will be showing you a tutorial both for a regular spider web as well as how to draw a spiderweb in a corner. \*this post contains affiliate links\* Drawing spiderwebs is really easy, in fact it's one of the easiest how to draw tutorials we have ever shared. And for more reason they are extremely fun to draw. You won't be able to stop (super calming too). While this drawing tutorial is most popular during fall - for Halloween time, spiderwebs are fun to draw all year round. And once you master drawing them, why not also learn how to draw a spider - it will go great along with the spiderweb. How to Draw a Spiderweb Step by Step What you need: our printable drawing guide (optional) pencil or black marker paper Step by Step Spiderweb Drawing Instructions Version 1 - How to Draw a Cobweb Step 1 Start by drawing a cross, draw one horizontal line and one vertical line. Step 2 Draw two more lines, this time diagonals. Step 3 Start weaving your web. Start with the inner "circle" making a small arch from one line to the other. We drew ours from the diagonal line to the vertical one. Step 4 Continue with the next arch, starting it where the previous one ended. Step 5 Now make more, all way around until you meet the first one. Step 6 Make more "circles". Weave your web until you are happy with how it looks like. All done, you have learned how to draw a regular spiderweb! Version 2 - How to Draw a Spiderweb Step 1 Start by drawing one horizontal line and one vertical line - at a right angle. Step 2 Draw a few diagonal lines in between the horizontal and vertical line. We think 3 is a nice number but you can make more of them or less of them. Step 3 Start weaving your web. Start by drawing the first arch, starting from the vertical line and going to the diagonal one. Step 4 Make more arches, until you get to the horizontal line. Step 5 Continue with the next set of arches. Step 6 And all subsequent ones, until your corner cobweb looks as it should. All done, you have learned how to draw a corner spiderweb. Get the Spiderweb Directed Drawing Printables Here Grab the How to Draw a Spiderweb With thousands of crafts, activities, worksheets, coloring pages, and drawing tutorials to print, you will always have just the resource you need at your disposal. Perfect for parents and teachers alike! 1 Take your pencil and on the top of the page, about two inches from the right start drawing a line to 2 inches (5.1 cm) below the right top corner. The line should loop down and have points.[1] (see the picture) 2 Draw straight lines from the points in your first line to the corner.[2] Advertisement 3 Make lines parallel to your fist line going all the way up. You should have 5 or 6 lines. Advertisement 1 Get a paper and make a cross on it, try to make both lines a similar length (using a ruler will help) 2 Draw diagonal lines through the centre, dividing the paper up from 4 to 8 sections. Make sure they are smaller than the cross you made before.[3] 3 Start connecting the lines with inverted arcs, this is an arc ), from the inside out. 4 Once you have reached the end of the web, elongate the diagonal lines, (this will make it look like it has supports). 5 Draw a spider by making a fuzzy ball, then drawing legs (eight of them) on your web. Or see the spider drawing tip.[4] 6 Finished. Advertisement 1 Draw a circle and draw a cross section which also extends outside the circle. 2 Draw two diagonal lines at the midpoint of the cross-sections which form an X-mark. 3 Draw squares which descend in size as it nears the centre point. Draw the corners or vertices of the square along the diagonal lines. 4 Draw diamond shapes descending in size as it nears the centre point. Draw the vertices along the lines of the cross-section. 5 Draw curves to connect the lines - from the squares to the diamonds, much like forming bridges. 6 Trace with a pen and erase unnecessary lines. You may add drawings for spiders. 7 Color to your liking! Advertisement Add New Question Question How long does it take to draw a spider? It depends on how much experience you have at the art of spider drawing, and how complicated your spider and/or drawing is. Be prepared to spend a while trying to get the legs correct when you first start, as this is the most time-consuming part of spider drawing. Question Do I have to draw the spider web correctly? That is completely up to you, but it's important to learn the rules before you break them. Question Do you need to colour the spider? No, you don't have to color the spider. See more answers Ask a Question Advertisement Thanks Helpful 74 Not Helpful 33 Thanks Thanks Advertisement Pencil Paper Ruler (optional) This article was reviewed by Jeanine Hattas Wilson. Jeanine Hattas Wilson is a Professional Painter and the President of Hattas Public Murals, Inc. With nearly 20 years of experience, Jeanine specializes in creating, overseeing, designing, and painting murals. Jeanine holds a BA in Advertising from Marquette University and a Studio Painting Minor from The Milwaukee Institute of Art & Design. She has studied at The Atelier Artien in Paris, France, Los Angeles Academy of Figurative Art, and under renowned artists such as Robert Liberace, Michael Siegel, and William Cochran. To date, Hattas Public Murals has painted nearly 5,000 commissioned works of art in homes and commercial and public spaces. This article has been viewed 443,052 times. Co-authors: 43 Updated: May 16, 2024 Views: 443,052 Categories: Drawing Geography and Nature Print Send fan mail to authors Thanks to all authors for creating a page that has been read 443,052 times. \*This article helped me during my class project to draw spider webs, which made me score an A+.\* Share your story