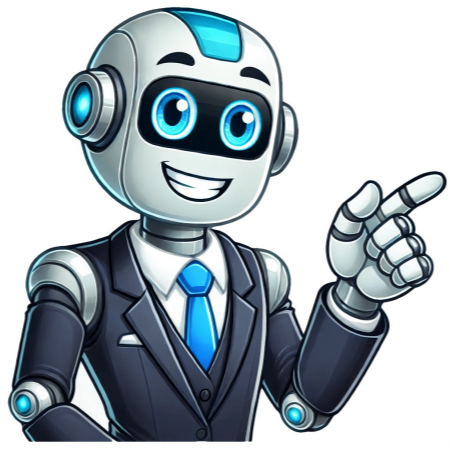


Continue































Inspired by the French countryside, French country house plans radiate warmth and comfort. At the same time, the French country style can be both rustic and luxurious with refined brick, stone, and stucco exteriors, steep rooflines, and beautiful, multi-paned windows. What to Look for in French Country House Plans? French country house designs have asymmetrical and symmetrical exteriors, from small cottages to estate-worthy chateaux. They can also be either one-story or two-story. Homes with the French country style include key common characteristics. Natural materials for the exterior, like stone, brick, stucco, and wood. Steep, sloped, and sometimes varied rooflines. Tall, rectangular windows highlighted by shutters or arches. An interior with wood or natural stone floors and exposed wooden beams. Styles with design elements similar to those of the French country include European and Acadian house plans. Check out our extensive collection and find your perfect home. [Page 2](#) [Plan#141-1259](#) [Plan#142-1063](#) [Plan#142-1083](#) [Plan#141-1148](#) [Plan#142-1139](#) [Plan#142-1188](#) [Plan#142-1145](#) [Plan#142-1011](#) [Plan#206-1009](#) [Plan#141-1267](#) [Plan#153-1868](#) [Plan#142-1097](#) [Plan#193-1077](#) [Plan#142-1140](#) [Plan#153-1417](#) [Plan#153-1943](#) [Plan#193-1086](#) [Plan#142-1094](#) [Plan#206-1024](#) [Plan#142-1162](#) [Plan#206-1060](#) [Plan#142-1092](#) [Plan#142-1081](#) [Plan#142-1137](#) 3,482 ft2 4 3.5 2 PLAN 10455 FROM: \$1,640.00 \$2050 2,180 ft2 3 2 1.5 PLAN 9412 FROM: \$1,116.00 \$1395 2,390 ft2 4 3.5 1 PLAN 9227 FROM: \$1,156.00 \$1445 3,170 ft2 4 3 1 PLAN 2009 FROM: \$1,116.00 \$1395 2,382 ft2 3 2 1 PLAN 9896 FROM: \$1,088.00 \$1360 2,674 ft2 4 2.5 1 PLAN 7505 FROM: \$1,036.00 \$1295 3,847 ft2 4 3 2 PLAN 6900 FROM: \$2,000.00 \$2500 1,690 ft2 3 2 1 PLAN 9480 FROM: \$1,076.00 \$1345 3,564 ft2 4 4.5 1 PLAN 5085 FROM: \$1,652.00 \$2065 3,402 ft2 4 2.5 2 PLAN 8046 FROM: \$1,996.00 \$2495 2,470 ft2 3 2.5 1 PLAN 9370 FROM: \$1,116.00 \$1395 3,402 ft2 4 2.5 2 PLAN 8055 FROM: \$1,996.00 \$2495 2,324 ft2 4 2.5 1 PLAN 9222 FROM: \$1,156.00 \$1445 3,760 ft2 4 4 2 PLAN 7526 FROM: \$1,800.00 \$2250 5,562 ft2 4 4 2 PLAN 4975 FROM: \$1,980.00 \$2475 3,162 ft2 4 4.5 2 PLAN 4217 FROM: \$1,356.00 \$1695 2,482 ft2 4 3.5 1.5 PLAN 5252 FROM: \$1,036.00 \$1295 2,789 ft2 4 3.5 1 PLAN 6581 FROM: \$1,036.00 \$1295 3,340 ft2 4 4.5 1 PLAN 9977 FROM: \$1,116.00 \$1395 3,690 ft2 4 3.5 1 PLAN 8735 FROM: \$1,396.00 \$1745 3,273 ft2 4 3.5 1 PLAN 6838 FROM: \$1,116.00 \$1395 1,500 ft2 3 2 1 PLAN 10710 FROM: \$1,076.00 \$1345 3,045 ft2 3 2.5 1 PLAN 1282 FROM: \$1,760.00 \$2200 3,976 ft2 4 4.5 2 PLAN 8836 FROM: \$1,436.00 \$1795 Cover Sheet with abbreviations, rendering, sheet index. FOUNDATION PLAN: Showing all dimensions, window & door locations, laminated beams, columns, floor materials, ceiling heights, fireplace size, window & door schedules and specifications. DOOR, WINDOW AND ROOF FINISH SCHEDULES: Window & Door schedules as well as room finish schedules showing flooring specs, crown molding, cabinets, countertop materials, & ceiling heights. FOUNDATION PLAN AND CEILING JOISTS LAYOUT: Dimensioned plan detailing the location and size of footings, slabs, brick shelves reinforcing steel, direction and size of ceiling joists, Laminate beam locations, specifications covering soil pressure, concrete strength, and requirements for the contractor to follow accepted practices. ELECTRICAL PLAN: Specifications, notes, schedules, and plan defining the location of panels, service, lighting fixtures, switches, outlets, smoke detectors, cable TV and telephones. FRONT AND REAR ELEVATIONS: The front and rear elevation of the house as drawn. Shows placement of doors & windows on exterior of house, as well as roof pitches, and locations of chimney, exterior vents, etc. and also includes any necessary details. SIDE ELEVATIONS, ROOF PLANS, WALL SECTIONS AND FRAMING DETAILS: Side views of house, and necessary framing and roofing details. Also included are wall sections, and any other necessary details for your framer or other subcontractors.